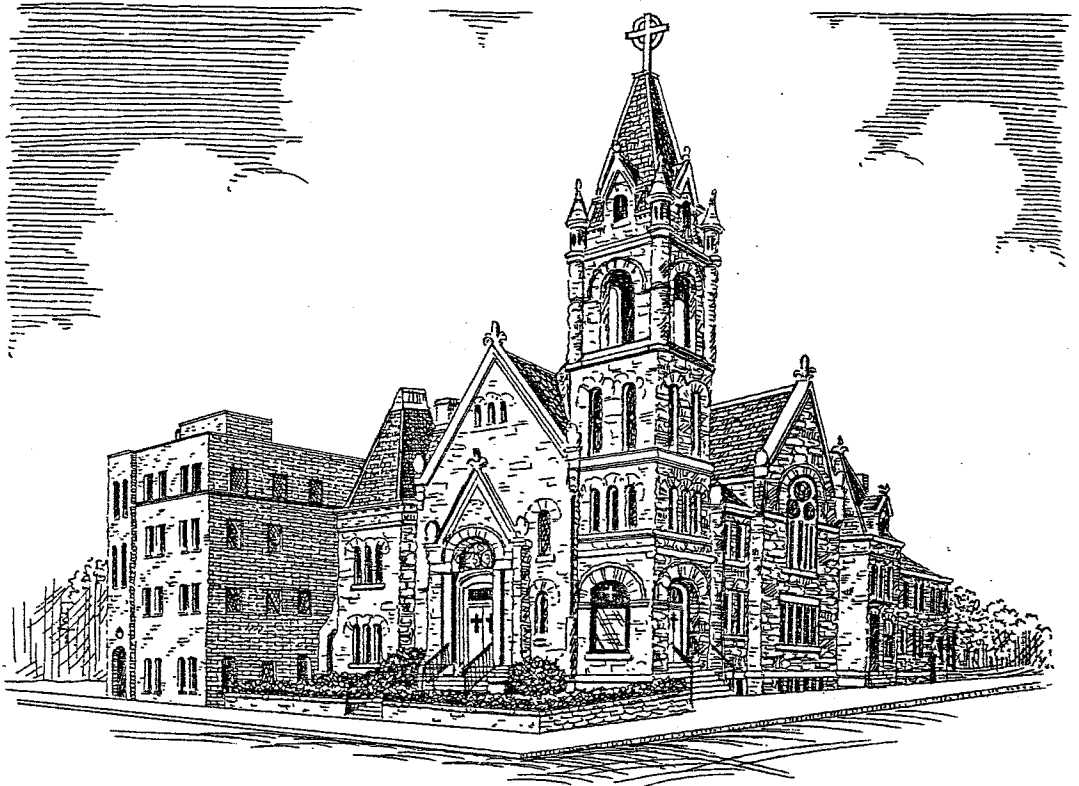


# THE VISITOR



## *The First English Lutheran Church*

*53 Park Avenue West (at Mulberry Street)  
Mansfield, Ohio*

---

Volume 51

AUGUST 2009

Number 8

---

**IN THIS ISSUE**

**PAGE**

Health Assessment Team Update ..... 1

Malawi Mission Team Report ..... 2

August Worship ..... 4

Men's Group ..... 5

Workday Ladies

Wednesday Noon Worship and Lunch

Music Therapy with Richland Newhope

Proclaim! Praise Team Rehearsal

Friendly Friday Group

Senior Choir Rehearsal

Food Collection

No *First Tuesday* in August ..... 6

Communion Services at Nursing Homes

September Visitor News Deadline

Choir Rehearsal August 23 for 5<sup>th</sup> Sunday .... 7

5<sup>th</sup> Sunday - One 10:00 a.m. Worship Service,  
Pot Luck Lunch following worship

August WELCA Calendar ..... 8

Thank You for Camp Mowana Goodies

Kits for LWR: School Kits in August ..... 9

August News in the Christian Day School .. 10

Peanut Butter and Jelly for the Needy

Senior High Youth Supper Donations

Church Women United Rummage Sale ..... 11

College Student Addresses

FELC Concert Series Event

July Council Notes ..... 12

Got Produce? ..... 13

Requests to the Prayer Chain ..... 14

Volunteer Scheduling Contacts

August Volunteers ..... 15-17

+++ **AUGUST CALENDAR** +++

Global Mission News ..... 18

2009 ELCA Churchwide Assembly ..... 19-21

Thrivent Financial for Lutherans ..... 22

Stewardship Corner

Within The Fold: ..... 23-24

*includes 60<sup>th</sup> Wedding Anniversary Invitation*

*Mike Hughs, seminarian update*

Moving? Change of Address Request ..... 25

August 80+ Birthdays

From Our Visitation Pastor ..... 26

Pastoral Acts ..... 27

Deaths ..... 28

Let Your Life Be a Legacy

FELC Columbarium ..... 29

Memorials

Recycle ..... 30

FELC Email Addresses and Web Site

Mission Statement ..... 31

Church Staff/Congregation Officers



# HEALTH ASSESSMENT TEAM UPDATE . . .

In the May Visitor we introduced you to the exciting initiative we were beginning which will help us assess the overall health of our church body here at First English Lutheran. One of the initial steps in the initiative was to have a group of our members complete the Natural Church Development (NCD) survey which was provided to us by our Synod office.

The results of the NCD survey have been received. To remind you: the NCD survey measured FELC on eight quality characteristics:

Effective Structures	Holistic Small Groups	Need-Oriented Evangelism
Empowering Leadership	Inspiring Worship Service	Passionate Spirituality
Gift-based Ministry	Loving Relationships	

The quality characteristic which FELC measured the lowest on, described as our Minimum Factor, was Loving Relationships.

Loving Relationships are described in the NCD process as “the heart of a healthy growing church. Jesus said people will know we are his disciples by our love. Practical demonstration of love builds authentic Christian community and brings others into God’s kingdom.”

The areas of focus for us in enhancing our Loving Relationships are:

Affirmation and Encouragement	Deepening Relationships
Atmosphere of Joy and Acceptance	Conflict Resolution

**Our next step will be to initiate Focus Group meetings** where you will be invited to share your insight and thoughts in a guided discussion of these areas of focus for Loving Relationships. **These meetings will begin in August** and will run through September and early October as needed to accommodate everyone who wishes to participate. Specific dates will be announced in upcoming bulletins.

The Health Assessment Team will also be presenting some Temple Talks beginning in early August to provide more insight into the status of the initiative, announce the time and place of the initial Focus Group meetings, announce additional meetings, and to encourage each of you to sign up for one of the meetings. We feel this is a critical juncture in the history of our congregation. **We want to encourage each of you to prayerfully consider participating in one of these upcoming meetings.** We need every voice to be heard as we work together to explore the concept of Loving Relationships and develop plans that will help us improve in this area which is “the heart of a healthy growing church.”

Your Health Assessment Team appreciates your continued support and prayers:

Mike Anderson	Susan Hogsette	Alicia Schulz
Ken Frayer	Nancy Pasheilich	Amy Skropits
Beth Harruff	Steve Ritz	Pastor Larson

# MALAWI ORPHAN CARE MINISTRIES



## FELC Mission Team Report!



Thank you all so much for your support and prayers before, during, and after our Mission Trip to Malawi. God is gracious, and He granted us a safe, meaningful and powerful journey. Our day- to-day plans did not quite go as we had anticipated.

The first change in plans came before we even arrived in Malawi. Our flight from Washington, D.C. to Addis Ababa, Ethiopia was late leaving Washington, so it was late arriving in Addis. Before we left Washington, we were assured by the gate personnel of Ethiopian Airlines that our late departure was not a problem – our connecting flight would be held for us in Addis because so many who were to be on that plane were on our plane. When we arrived in Addis, our flight to Malawi had already left. The airline took care of scheduling and paying for a hotel and meals for us until the next morning. This unplanned stopover in Addis Ababa allowed an unpressured introduction into life in Africa, as it seemed all of Africa was parading by in front of our hotel. We were scheduled to meet with the Board of Kanyenyeva Orphan Care Ministries the afternoon of our arrival. This meeting was rescheduled. We discovered later that this delay was a blessing, as we had a chance to meet the members of the board in the days that followed, and to do ministry with them as well. We had the chance to work at Kanyenyeva, and when we did meet together, our questions and conversation were much better informed.

The 5 members of our team each brought their own gifts to the team, and this allowed us to view things from many different angles. By joining our observations together, we were able to ask better questions. By joining our experiences together, we were able to do better ministry. God knew what He was doing when He formed the team.

We were able to accomplish much of what we set out to accomplish. But we were also allowed to learn much about the Malawian culture, and how life in the world's poorest nation differs greatly from our own. Intercity transportation is difficult, if not next to impossible. Internet communication is spotty, and slow. Cell phone coverage, interestingly enough, is better than it is in much of the U.S. Electricity is not found everywhere, and where it is available, it is not always flowing. We think we had one day in Malawi when we didn't lose power at some point. Water is not safe to drink, or to wash food in. We purified water every day, and practiced draconian dietary measures to avoid intestinal illness. Hot water is sketchy. Sanitary facilities in the villages are nonexistent. Even in at least one of the areas of the Capital city of Lilongwe, there was not running water, and outhouses for bathrooms. Roads were poor, with pavement narrow and thin, and dirt roads everywhere – even in the city. Dirt and dust were our constant companions, as were the smell of wood smoke from cooking fires, and the crowing of roosters.

*(continued)*

In spite of all of these difficulties, the people of Malawi were, by and large, gracious and open. They are resource poor, yet relationship rich. While we in America are resource rich, we guard our goods with such ferocity that our relationships often suffer. The people of Malawi have very little, so people – not things – are the focus of their lives. We can learn much from them in this aspect of life.

Shadreck and his wife Yamikani shared their lives with us for the 11 ½ days that we were there. Their daughter, Shamiso, enjoyed having five other doting adults around to play with and spoil her. She is a beautiful little girl. Shadreck and Yami were our driver, cultural interpreters, guides, protectors, and translators for our time there. Navigating the peculiarities of Malawian life would have been impossible were it not for those two wonderful people!

We spent time in the homes of the village of Kanyenyeva, learning about their day-to-day lives and challenges. We fetched water from the spring hole. We pounded and sifted Maize. We prepared a meal in a Malawi 'kitchen.' We shopped for food in an open market. We gave sports equipment to the kids, and played with them. We taught Bible studies and prayed with them. We helped the feeding program feed over 150 young, hungry children. We earned the trust of the people of the village, which greatly helped when we introduced Solar Cooking. We gave away over 200 toothbrushes and tubes of toothpaste. We sang with them, and danced with them. We experienced jarring incongruities – like ox carts sharing the road with Mercedes sedans, and cell phone usage

in the remotest of areas. We started the construction of a Meeting Hall. We worshiped with an Evangelical Lutheran Church in Malawi congregation, and met with the national leadership of that Lutheran World Federation sister church.

We ended our week with a powerful meeting with the Board of Kanyenyeva Orphan Care Ministries. We shared with them about our experiences of the preceding days. We shared with them questions that we had discovered during our time there, and questions that were forwarded from the Global Mission Committee, as well as questions that had arisen during conversations with Church Council members. They graciously answered all of the questions, wanting for us to understand as well as we can what is happening in the ministry of Kanyenyeva. Pastor Tom Mambo of Calvary Chapel church, is the chairman of the Board. He and Shadreck share a vision for the Kanyenyeva Ministry that goes far beyond a feeding program. They hope to develop a vibrant, self-supporting community that is grounded in the Christian faith, and that will be a beacon for the people of the surrounding areas.

Shadreck and Yami were very sad to see us leave. Even though I'm sure that we wore them out, they were very appreciative of our visit. The people of Kanyenyeva now have 5 faces that they can remember when they hear about First English Lutheran Church. They have a connection and a hope. Our making the effort to be with them means to them that they are worth something, that they are important enough for us to come all the way



## REGULARLY SCHEDULED ACTIVITIES!

- Monday,  
Aug 3      **Men's Group** meets at 9:30 A.M. the first Monday of the month for breakfast at Denny's on West Fourth Street in Ontario. Contact: Hal Simmons, 419-529-6586.
- Wednesday,  
Aug 5 & 19      **Workday Ladies Sew** patchwork quilts 8:30 A.M. to 12:30 P.M. on the third floor of Luther Hall. Tracing and cutting, ironing, machine sewing, and tying. WELCA contact: Cheryl Lantz, 419-756-5506. *If you can sew patches to make quilt tops at home, contact Pat Reed at 419-756-1372.*
- Every  
Wednesday      **Wednesday Noon Worship and Lunch**, 12:10 P.M. worship in the Chapel; lunch following in the undercroft.
- Every  
Thursday      **Music Therapy with Richland Newhope individuals**, 9:15-10:15 A.M. in the Emmaus Room with Becky Pittman, Board Certified Music Therapist. Join us! Contact Becky Pittman at 419-529-3876 or [bpittman@felc-mansfield.org](mailto:bpittman@felc-mansfield.org).
- Every  
Thursday      **Proclaim! Praise Team Rehearsal**, 5:30 P.M. in the undercroft (please use the East side Luther Hall entrance). Contacts: Kristi Larson, 419-756-3858, or Becky Pittman, 419-529-3876.
- Friday,  
Aug 21      **Friendly Friday Group**, 10:30 A.M. program in the Emmaus Room. Lunch is served at 11:30; games until 2:00. Rides available. Coordinator: Margaret Battisti, 419-526-4381.
- Sunday,  
Aug 23      **Senior Choir rehearses** on Sunday, August 23, 10:00 a.m. They will sing at the 5<sup>th</sup> Sunday - One 10:00 a.m. Weekend Service on August 30.
- Sunday,  
Aug 30      **Food Collection Weekend.** The June collection totaled \$554 for our Wednesday Noon Worship and Lunch Program (includes Paul Conrad memorials) and 8 bags of groceries for The Salvation Army. Thank you for your continued support!

### Schedule Notes:

- Prayer Shawl** knitters will not meet in August.  
**Fireflies children's choir** will resume September.  
**Blood pressure readings** will resume in the Fall.  
**The Matins Choir** will not sing in August.

# **FIRST TUESDAY LUNCH GROUP** **WILL NOT MEET IN AUGUST**

Join us again for *First Tuesday* on September 1 in the Emmaus Room.

---



Our Nursing  
Home Ministry

## **COMMUNION SERVICES AT NURSING HOMES . . .**

In order to provide communion for First Lutheran members who live in nursing homes or assisted living facilities, monthly worship services are scheduled in four locations with Communion Deacons assisting the pastors. All residents of the facilities are invited to attend, and members of First Lutheran are encouraged to come and accompany a family member or friend.

### Tuesday, August 18

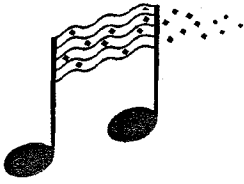
9:00 A.M. Elmcroft of Ontario  
10:15 A.M. The Waterford  
2 :00 P.M. Mifflin Care Center

### Thursday, August 20

9:30 A.M. Brookdale Sterling House

---





**CHOIR REHEARSAL ON AUGUST 23 TO PREPARE  
FOR 5<sup>TH</sup> SUNDAY— 10:00 AM WORSHIP . . .**

On Sunday, August 23, the choir will meet at 10:00 a.m. in the choir room to rehearse an anthem and service music for the 5<sup>th</sup> Sunday - one 10:00 a.m. weekend service on August 30. Individuals who normally cannot commit themselves to our full schedule of rehearsals are invited to sing. Please consider joining us!

- Dr. Tim Guenther



**5<sup>TH</sup> SUNDAY –  
ONE WORSHIP SERVICE**

**AUGUST 30, 2009**

**One Sunday worship service at**

**10:00 a.m.**

**for the weekend!**

***Congregational Pot Luck Lunch following worship!***

**Main dish provided; bring a side dish/dessert to share.**



## AUGUST 2009 WELCA CALENDAR

CIRCLE/EVENT	DATE	DAY OF WEEK	TIME	MEETING PLACE/TOPIC
SARAH LYDIA FIRST TUESDAY EVE	NO MEETING IN AUGUST			
MARY	14	FRIDAY	11:30 A.M.	Lunch at Rise & Dine, Lexington Ave
PLANNING TEAM	17	MONDAY	7:00 P.M.	Emmaus Room
WORKDAY LADIES	5 & 19	WEDNESDAY	8:30 A.M.	3 <sup>rd</sup> Floor

Funeral Dinners: Squad F, Mary Schwartz & Eileen Miller

Altar Group Workers: Nave – Devera Ritz; Chapel – Bev Graham; Contemporary – Jan Fisher



### THANK YOU FOR YOUR CONTRIBUTIONS TO CAMP MOWANA COUNSELORS!

We delivered two large tubs of snacks, candy, gum, games, Sharpie markers, and bug spray to Camp Mowana for the enjoyment and use by the counselors. Thank you very much to those who generously contributed. I am sure all those young counselors are very appreciative. Ally Hannemann from our congregation spoke for the rest of the counselors in saying a big "Thank you!" Mowana is a place full of Christian love, and I am glad that we can convey our love to them as well.

– Jan Fisher for WELCA

## 2009 SEWING KITS, HEALTH KITS, SCHOOL KITS, AND LAYETTES FOR LUTHERAN WORLD RELIEF . . .

Our Women of the ELCA (WELCA) support Lutheran World Relief by sending comforters (prepared by our Workday Ladies), Sewing Kits, Health Kits, School Kits, and Layettees.

**One kit and the items needed for it will be featured in the June, July, August, and September issues of The Visitor.** Please consider completing one or more kits to add to First Lutheran's contribution:

### SCHOOL KITS in August

Padding or notebooks of ruled paper approximately 8 ½ x 11" with 150-200 sheets of paper

One blunt-nose scissors

One 30-centimeter ruler or a ruler with centimeters on one side and inches on the other

One pencil sharpener

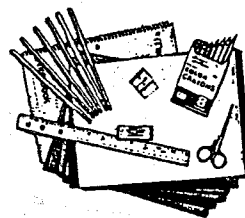
Six new pencils with erasers

One eraser approximately 2 ½" long

12 sheets of construction paper in assorted colors

One box of 8, 16 or 24 crayons

One cloth bag (provided in the Narthex/Luther Hall lobby)



Pack items in bag, fold handles over and secure with two large rubber bands or tie with yarn. We have a good supply of cloth bags available to be filled for School kits.

Containers for completed kits are in the Narthex and lobby of Luther Hall. **All kits must be returned to the church as a complete kit ready for shipping. The deadline to turn in completed kits is October 4.** They will be packed and then taken to Seville, Ohio, later in October for shipping.

**Monetary donations for shipping costs** may be placed in a pew envelope with your name, envelope number, and amount (checks payable to First English Lutheran Church. Memo line: LWR kits shipping).

— Jan Fisher, 419-589-2820



## AUGUST NEWS IN THE CHRISTIAN DAY SCHOOL . . .

Our Bible theme for August is Matthew 11:28: Come to me all you who labor and are heavy laden and I will give you rest.

The summer is quickly coming to an end, and thoughts are turning back to school. We hope to enjoy this last month of summer as much as we did the first two months. The campers have appreciated the good weather, and have visited many parks in the area as well as the Retreat Center.

We would like to thank everyone for the great job they did on the Luther Hall third floor ceiling project. Everything looks great and was done in record time. The staff and children are looking forward to the brighter and cleaner looking classrooms.

– Terry Bianchi, CDS Director

---

**CREAMY PEANUT BUTTER AND JELLY FOR THE NEEDY**, a WELCA outreach ministry with our Wednesday Noon Lunch Program. Donation boxes are in the Narthex and Luther Hall lobby.

---

**SUNDAY SUPPER DONATIONS NEEDED  
FOR SENIOR HIGH YOUTH  
BEGINNING IN SEPTEMBER . . .**



Our Senior High youth group meets every Sunday evening during the academic year for fellowship, study, service projects, and *supper*. If you can donate a simple meal for the group (once, twice, or regularly!), or would like more details, please contact *Becky Sarbach*, *Service Ministry chair*, at 419-589-7945. Thanks for your support!

– Teri Brenkus, Youth Committee Chair



Church Women United

## RUMMAGE SALE

Thursday, September 10, 9 am - 4 pm

Friday, September 11, 9 am - 1 pm

**First United Methodist Church**

(corner of Park Avenue East and North Diamond Street)

Items may be brought to First United Methodist Church on Tuesday and Wednesday, September 8 and 9 during the hours of 8 am - 4 pm. **Please use the Park Avenue East entrance.** There is short term limited parking near that entrance. Please, please, bring clean usable items. Questions? Contact Helen Anderson, CWU representative, at 419-756-0381.

---

**COLLEGE STUDENT ADDRESSES.** Please call or email the church office (419-522-0662 or [cstewart@felc-mansfield.org](mailto:cstewart@felc-mansfield.org)) with your college student's mailing address and email address for the coming academic year.

---

*Mark your calendar!*

**First English Lutheran Church**

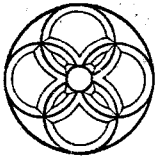
**Concert Series Event**

**Sunday, September 27, 2009**

**4:00 p.m. in the Nave:**



The Carol Bernhardt Woodwind Trio and Dr. Timothy E. Guenther, organ



Congregation  
Council

## JULY COUNCIL NOTES . . .

President Ken Frayer called the Tuesday, July 14, 2009 meeting of the First English Lutheran Church Congregation Council to order at 7:05 p.m., welcoming newly elected Council persons Teri Brenkus, Jan Fisher and Don Harruff. Pastor Larson opened the meeting with prayer.

**SENIOR PASTOR:** Pastor Larson asked everyone to keep the ELCA leadership and delegation in prayer as they meet for the National ELCA Assembly August 17 to 23. Pastor Larson will be on vacation August 3 to 15.

**ASSOCIATE PASTOR:** Pastor Jones was welcomed home from his mission trip to Malawi and reported on his trip, mentioning the Malawi people were extremely pleased that the mission team came. The solar cookers worked well, the children appreciated the sporting equipment, and the meeting hall and feeding center construction was begun and will be completed by local workers. Shadreck and Yami Chicoti were their interpreters, drivers, guides and protectors. Pastor Jones will be on vacation July 16 to August 2.

**PROPERTY:** Shawn Volz informed Council members that Brent Calver provided and installed mulch around the flower beds and shrubbery in the front church lawn, with much appreciation expressed for his volunteer work. Tom Pasheilich, Bill Schwartz, Jim Scheiber and other volunteers have been working on the Luther Hall third floor ceiling and electrical project. John Meyer and the Wednesday noon lunch volunteers washed all the undercroft chairs. During the recent Youth

mission trip, the youth gave the retreat center a good cleaning. Thanks to all volunteers for a job well done!

**EVANGELISM:** Steve Ritz presented information about gift cards donated to the Concert Task Force. Council approved the Concert Task Force to sell the Old Bag of Nails Restaurant \$25.00 gift card and the Rancho Fiesta Restaurant \$40.00 gift card. The next concert will be held Sunday, September 27, 4:00 p.m., featuring the Bernhardt Woodwind Trio and Dr. Tim Guenther on the organ. A Renewing God's House of Prayer Bridge Team report will be given Sunday, August 30.

**GLOBAL MISSION:** Jeanne Hillman reported the "Pies for Paula" fund raiser was successful with a total of \$581 raised and sent to Paula Powell, a missionary in South Africa. She expressed a big thank you to the pie bakers and those who purchased the pies. Kay Leedy is updating the church website with Global Mission messages. Brochures about Meijer's Shop, Earn and Save program and Milliron recycling lists are available around the church. Funds raised from these programs will help support missionaries.

*(continued)*

**WORSHIP:** Roscoe Thompson thanked all who attended the Andrew Ironside concert and everyone who helped make the event successful. Andrew was impressed with the successful community worship event, playing with the organ (a first for him), the hospitality and the experience of playing in a Lutheran church for the first time.

**STEWARDSHIP:** Jan Fisher stated her newly formed committee consists of the following members: Lois Brown, Jerry Diday, Jerry Gallagher and Lynda Ringold. Jan has been putting stewardship "blurbs" in weekly bulletins and The Visitor, and other committee members will contribute in the future. Jan stated she believes stewardship needs to be taught and kept in front of the congregation at all times, not just once a year.

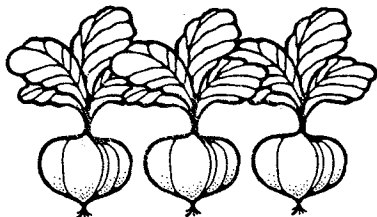
**YOUTH:** Teri Brenkus reported our church has 35 active junior and high school youth, grades 6 through 12. During the recent Youth

Mission Trip to Dayspring, there were 32 youth involved with 12 chaperones assisting at various times. The youth group did yard and landscaping work, interacted with the residents and celebrated a theme day with them. The youth were requested to return soon. Meals are needed for the Sunday evening high school Youth Group meetings. If interested in helping, contact Teri Brenkus or Becky Sarbach. Chris Cichanowicz expressed a special thank you to Tricia Volz and Becky Sarbach for their work with the Youth Mission Trip.

**CHRISTIAN DAY SCHOOL:** Linda Elgin said 112 students are enrolled in CDS, including the summer campers who are having a great time. Council approved Sierra Mercer as a part time CDS employee.

**ADJOURNMENT:** This meeting adjourned at 10:08 p.m. with prayer by Ken Frayer.

– Mary Schwartz  
Congregation Council Secretary



## GOT PRODUCE?

Your surplus fresh garden produce is welcome for our Wednesday Noon Lunch program! Call Mary Schwartz at 419-747-2600 if you have extra to share from your garden.

## REQUESTS TO THE PRAYER CHAIN

The Prayer Chain provides prayer support to those with special needs or concerns. Prayer requests for members or non-members may be called in to *Carol Lauthers, 419-756-8870 (home) or 419-612-4088 (cell)*. Join our prayer chain ministry and become a member of the Prayer Chain! There are no meetings to attend; just make one or two phone calls and pray! Questions about this ministry? Call Carol Lauthers at the numbers above.

---

## VOLUNTEER SCHEDULING CONTACTS

*The monthly volunteers list is published in The Visitor and is posted on the bulletin boards. The following are responsible for scheduling the listed areas of volunteer ministry:*

**Betty Guenther, Staff Secretary**

**419-522-0662**

Acolytes

Assisting Ministers

Greeters

Lay Readers

Luther Hall Sunday Door Duty

**Chris Cichanowicz,**

**Sunday School Superintendent**

**419-529-6593**

Nursery Helpers

**Gene Luedy, 419-526-4304**

Pew Pad Gleaners

**Roscoe Thompson, III, Worship Chair**

**419-522-7571**

Communion Preparers

Communion Assistants

Sound Booth Operators

**Ruth Sweval, 419-526-5090**

8:00 am Sunday Prayer Partners

**Barb Hill, 419-756-4998**

Blood Pressure Nurses

**Gene Harsch, 419-774-0247**

Ushers

**Renee Blankenship, 419-632-6162**

Proclaim! Ushers/Greeters

Proclaim! Communion Preparers

Proclaim! Communion Assistants

**Becky Pittman, 419-529-3876**

Children's Church Leaders

# AUGUST VOLUNTEERS

## GREETERS 5:00 P.M.

Aug 1	Elva Bonser	Aug 22	Elva Bonser
Aug 8	Joci Kirst	Aug 29	5 <sup>th</sup> Sunday - one 10:00 Sunday service
Aug 15	Joci Kirst		

## GREETERS 8:30 A.M.

Will & Dolores Esler	Narthex
Juanita Baker	East Entrance

## USHERS 8:30 A.M.

Paul Theaker  
Steve Ritz  
Mike Anderson

## GREETERS 11:00 A.M.

Tom & Stacey Crall	Narthex
Marilyn Dinges	East Entrance

## USHERS 11:00 A.M.

Gene Calver  
Greg Hughes  
Pat Smith

## 8:00 A.M. SUNDAY PASTORS PRAYER PARTNERS TEAMS

Aug 2	Lowell Weeks & Chris Cichanowicz
Aug 9	Jim Scheiber & Mary Schwartz
Aug 16	Ken & Karen Frayer
Aug 23	Rob Hogsette & Steve Ritz
Aug 30	Lowell Weeks & Chris Cichanowicz (5 <sup>th</sup> Sunday - one 10:00 Sunday service)

## 11:00 ASSISTING MINISTERS

Aug 2	Annette Doklovic	Aug 23	Stan Cichanowicz
Aug 9	Bob McCready	Aug 30	(Two pastors - one 10:00 service)
Aug 16	Chris Kaschube		

## LUTHER HALL SUNDAY DOOR DUTY

	<u>8-9:45 am</u>	<u>9:45-11:05 am</u>
Aug 2	Cindy Russell	Tom Hillman
Aug 9	Henry Keultjes	Pat Reed
Aug 16	Stan Cichanowicz	Jodi Mumaw
Aug 23	Betty Guenther	Ron Rehm
Aug 30	9:00-10:05 am: Shelley Shupp	

## LAY READERS

### 5:00 P.M. Saturday Chapel

Aug 1	Jean Ridenour	Aug 22	Kay McNaul
Aug 8	Kay McNaul	Aug 29	5 <sup>th</sup> Sunday - one 10:00 Sunday service
Aug 15	Jean Ridenour		

### 8:30 A.M.

### 11:00 A.M.

Aug 2	Sherry Winbigler	Jo Wirstrom
Aug 9	Jerry Gallagher	Helen Anderson
Aug 16	Mary Hujus	Stacey Crall
Aug 23	Bill Schulz	Shirley Lane
Aug 30	5 <sup>th</sup> Sunday - 10:00 am: Chris Kaschube	

## ACOLYTES

### 8:30 A.M.

### 11:00 A.M.

Aug 2	Sarah Ward	Alissa Ruth
Aug 9	Trayce Prather	Sara Hannemann
Aug 16	Michael Ward	Rachel Shupp
Aug 23	Paul Hogsette	Katilyn Stransky
Aug 30	5 <sup>th</sup> Sunday - 10:00 am: Katie Ritz	

## COMMUNION PREPARERS

Aug 2	11:00 a.m.	Wes & Sandie Volz
Aug 9	8:30 a.m.	Bill & Pearl West

## COMMUNION SERVERS

(regular communion)

### Aug 2 - 11:00 am

### Aug 9 - 8:30 am

Bread Servers	Pastor & Assisting Minister	Pastor & Jane Anderson
Wine West	Beth Harruff	Dolores Esler
Cups West	Don Harruff	Margaret Runyon
Wine East	Carol Pierce	Steve Ritz
Cups East	Jane Sprang	Devera Ritz
Intinction	Chris Cichanowicz	Sherry Winbigler

**PEW PAD GLEANERS**

Aug 2	Liz Sprang	Aug 23	Carol Fry
Aug 9	Brenda Eyerly	Aug 30	Jodi Mumaw (10:00 service)
Aug 16	Lolita Scheiber		

**CHILDREN'S CHURCH LEADERS**

Becky Pittman, coordinator

**COFFEE FELLOWSHIP HOSTS**

Christian Education/Youth Committees

**AUGUST ALTAR WORKERS**

Nave:	Devera Ritz
Chapel:	Bev Graham
Proclaim!:	Jan Fisher

+ + +

**11:00 PROCLAIM! CONTEMPORARY WORSHIP**

**Greeters/Ushers**

Aug 2	Cindy and Robyn Russell	Aug 23	Ronda and Ashley Rehm
Aug 9	Sarah Jones and Elizabeth Volz	Aug 30	5 <sup>th</sup> Sunday - 10:00 am Nave
Aug 16	Haley Pittman		

**Aug 16 Communion Preparer**

Jan Fisher

**Aug 16 Communion Servers**

Cheryl Lantz and TBA  
Ted and Karen Ellis

**Intercessory Prayer Team**

Matt Blankenship and Kristi Larson



## GLOBAL MISSION NEWS . . .

**Paula Powell** sends greetings from South Africa. She welcomed a visit from her sister, Sharon, and her husband, Chad, in May. Paula was able to see parts of Africa that she would not have been able to see had they not come. While in Cape Town, they visited iThemba Labantu, The Lutheran Community Centre. The Centre started in April 2004 with funds from LUCSA and other partners to assist persons in the last stages of AIDS. Many persons responded to treatment and care and are now living productive lives, with some volunteering at the Centre today.

Paula and her family visited Kruger National Park where they went on morning safaris and saw "up-close and personal" elephants, lions, rhinoceros and buffalo. The family journeyed to Botswana to visit friends, one of whom started Stepping Stones International, an after school program to assist orphans and vulnerable children ages 10-18, in learning the life skills needed to get them on the right path towards a hopeful future. Demonstrating the effectiveness of the program, a number of youth have already secured jobs in their area of expertise.

In July, a Theological Seminar and LUCSA General Conference was held. Bishops, church leaders, Lutheran Theological Professors and students gathered in Johannesburg for information sharing and discussion of the three Lutheran Seminaries in South Africa.

### PRAYER CONCERNS FROM PAULA POWELL:

*Pray for our sisters and brothers* all over the world who have been infected and are affected by HIV-AIDS, especially in Sub-Saharan Africa.

*Pray for pastors* who face challenges daily of the effect of HIV on families (the sick, the

newly diagnosed, the dying, and those left behind).

*Pray for our ELCA leaders* and staff in the U.S. for their hard work, time away from their families, and long trips to provide support to partner churches. And, pray for their families in their selfless support.

I continue to thank all of the churches and individuals at home for remembering God's mission in Southern Africa through prayers and monetary support. God bless you in your caring and sharing.

— In God's Grace, Paula Powell

## 2009 ELCA Churchwide Assembly to Vote On Sexuality Statement & Ordination

This month the ELCA Churchwide Assembly (August 17-23, 2009) will vote on two key matters concerning human sexuality: "*Human Sexuality, Gift and Trust*" a proposed Social Statement; and also on a four-step procedure that will determine whether or not the ELCA should move to a revised stance concerning ordained clergy --- namely to allow certain congregations or Synods, if they wish, to ordain persons who are homosexual in orientation and are living in a committed same-sex relationship. Currently the ELCA ordains married clergy and celibate homosexual or heterosexual persons.

In spite of requests from 15 Synods of The Evangelical Lutheran Church in America and a significant majority of ELCA bishops asking for a two-thirds majority vote, the ELCA Church Council voted to stick with its November decision to propose rules of procedure for the 2009 ELCA Churchwide Assembly that would require only a simple majority vote on resolutions about changes in church teaching and policy to allow practicing homosexuals to serve as ELCA ministers. The Church Council of the ELCA met March 27-30 in Chicago.

The 2009 Churchwide Assembly will adopt its rules of procedure at its first session and could amend the rules to reinstate the two-thirds majority requirement for changes in ministry standards.

ELCA Presiding Bishop Mark Hanson set the tone for all of the council's discussions with his report at the start of the meeting on March 28. He said, "We are at the intersection of fear and hope," and went on to say that the council and the ELCA should not let fear keep them from doing what they ought to do and be who they ought to be. He urged them to move forward boldly.

The official documents that the Churchwide delegates will be voting on can be found on-line at [www.elca.org](http://www.elca.org) See: Assembly 2009 - Actions Items

*(continued)*

## **Prominent Lutheran Theologians and Church Leaders Affirm Biblical Teaching on Sexuality and Call for Defeat of ELCA Sexuality Proposals**

Prominent Lutheran theologians and church leaders have written an Open Letter to the Voting Members of the 2009 Churchwide Assembly of the Evangelical Lutheran Church in America (ELCA) asking them to affirm biblical teaching on sexuality and to reject proposals to change church teaching and policy regarding marriage and same-sex sexual behavior. The open letter was released Tuesday, May 19.

The 2009 ELCA Churchwide Assembly (Aug. 17-23 in Minneapolis) will consider a proposed social statement which would change ELCA teaching on human sexuality and a proposal which would change church standards to allow ELCA pastors to be in same-sex sexual relationships. The open letter will be mailed to the 1,045 voting members of the 4.7-million-member denomination's Churchwide Assembly.

"The proposals are in fact no compromise. They clearly imply that same-sex blessings and the ordination and rostering of homosexual persons in committed relationships are acceptable within the ELCA. The teaching of the church will be changed. We should not make such an important decision without clear biblical and theological support. The Task Force did not provide such support, nor has it been provided in statements from some of our colleagues in ELCA institutions," the open letter states.

### **The Letter offers five reasons why the proposals must be rejected:**

1. "If the assembly adopts the proposed rules of procedure, a simple majority of one Churchwide Assembly will alter the moral teaching on sexuality we have shared with the vast majority of the church past and present. We are concerned that such a procedure shows an indifference to the common mind of the one, holy, catholic and apostolic church throughout the ages and across cultures."
2. "The church is founded on the whole Word of God, both law and gospel. The Task Force texts seem to permit variation on all ethical questions, no matter how fundamental. How Christians behave sexually is not a matter of indifference to our life in Christ."
3. "If the ELCA were to approve the public recognition of same-sex unions or the rostering of persons in such relationships, it would damage our ecumenical relationships."

4. "Our unity in the office of ministry will be fractured."

5. "Conscience can err. The Word of God, not conscience, is the final court of appeal in the church."

"We feel we are called to support and advocate the biblical teaching on human sexuality and urge you to defeat all the proposals from the Task Force for ELCA Studies on Sexuality that the Church Council has forwarded to you. We pledge to you our prayers and we invite you to work with us for the renewal of our church under the Word of God," the open letter concludes.

Lutheran CORE brought together some prominent theologians and church leaders April 29 in Phoenix to draft the letter. Other scholars and church leaders were then asked to add their names to the open letter. More than 60 scholars and church leaders have signed the letter. Other ELCA pastors and lay members may add their names to a list of people endorsing the letter online.

"We wanted a clear statement from Lutheran theologians and church leaders who uphold biblical teaching on sexuality as it has been believed and taught by the Christian Church for nearly 2,000 years," said the Rev. Paul Spring of State College, Pa., chair of the Lutheran CORE Steering Committee.

"We are grateful for the scholars and church leaders who have been willing to stand with us and with the vast majority of Christians worldwide and throughout time," said Spring, the retired bishop of the Northwestern Pennsylvania Synod.

You may read the letter in its entirety, read the list of signatures, and add your name to those signing this letter by going to: <http://www.lutherancore.org/papers/open-ltr-2009.shtml>

**Additional articles in response to the ELCA Churchwide Assembly proposals are available at these websites:**

[www.wordalone.org](http://www.wordalone.org)

[www.lutherancore.org](http://www.lutherancore.org)

## THRIVENT FINANCIAL FOR LUTHERANS . . .

The 2009 Congregational Funds received from Thrivent Financial for Lutherans have been designated toward these FELC projects:

- Helped in feeding the Tetelestai cast when they performed here during Lent.
- Provided paint for painting the CDS classrooms on the third floor of Luther Hall.
- Will support the youth fund raiser during the Steam Threshers Event at the Blackfork Retreat Center in September.
- Looking into help painting the church bus.

If you have suggestions where we can designate future Thrivent funds within the congregation, contact either Larry Lantz, Mary Schwartz, or Carolyn Weeks.

---

## STEWARDSHIP CORNER . . .

The human body has two kidneys, but can survive with just one. I heard a story about a woman in a congregation who was suffering kidney failure. As they prayed for her in worship that Sunday, something strange happened. During the passing of the peace, people approached her and said, "I'd be willing to see if my kidney could be a match for you." Would *you* consider this?



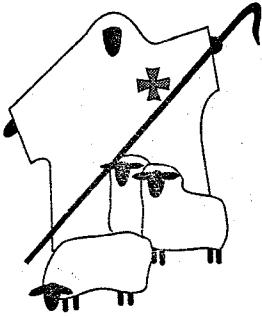
Often, scarcity's claws seal our eyes, ears, and hearts from living the radical generosity of Jesus. Paul says, "You are familiar with the generosity of our Master, Jesus Christ. Rich as he was, he gave it all away for us--in one stroke he became poor and we became rich." (The Message). As we live life in the time of Pentecost, we offer praise to God for the opportunity to be caretakers of all that God has given us! Remember, we get to do this!

*Generous God, you give, we receive. Help us play well with others. Amen.*

- Kevin Bergeson, Master of Divinity, 2007

Spirit of Christ Community Lutheran Church, St. Louis Park, MN

## WITHIN THE FOLD . . .



From Trudy Steer and Brad Watts: “Thank you to Pastor Larson and everyone (especially Proclaim! attenders) for your welcome into the fellowship of First Lutheran, and for your support at Autumn’s baptism on June 28.”

From Virginia Shasky and Martha Smith: “Thanking Pastor Andy and Pastor Paul for their prayers and encouragement during the time of surgery for Harold Shasky, Jr.”

From Leland McKean: “I would like to thank Pastors Larson, Jones, and Kress for their most welcome visits to me while I was confined to Shelby Med-Central Hospital during my recent illness. It was greatly appreciated. Thank you.”

From Jim & Emmie Shaum: “We owe you thanks for the many times we have been blessed with good wishes, prayers for our health, and many other blessings. They have followed us near and far. That is a comfort to have like no other when they follow us far. We send our belated thanks for your prayers whenever we have needed them. It is fun to read the signatures on the anniversary poster, and it helps us remember the good times we’ve had with Juftak Class members since 1956.”

From Edward & Gretchen Albrecht: “We wish to thank all our church family who signed our 50<sup>th</sup> wedding anniversary poster; it is greatly appreciated.”

From Frank & Alfreda Sqrow: “Thank you for the large card of congratulations for our 70<sup>th</sup> wedding anniversary. All the signatures of our church families made it a memorable day. Many blessings to all.”

From Jerry Gallagher: “I wish to thank Pastor Larson and my dear First English friends for their prayers, support, and encouragement before, during, and after my surgery. I have been blessed.”

From Dot & Tom Blaney: “Our heartfelt appreciation and gratitude to the pastors and members of the congregation for the prayers, support, and many expressions of sympathy at the death of Mother, Virginia McBride. God’s presence has been felt through all of you. We are truly blessed.”

From The Salvation Army: “Thank you for your donation of eight bags of canned food that will be of so much help to the many families we serve in the Richland County area. There are many who will have to cut costs on basic needs such as food to pay for increasing utility costs. It is only through your generosity that The Salvation Army can carry on its mission of Doing the Most Good.”

*(continued)*

The family of Weldon & Elaine Lemon cordially invites the congregation to the **celebration of the 60<sup>th</sup> wedding anniversary of Weldon and Elaine on Sunday, August 9, 2009, from 2-4 p.m. in the Emmaus Room.**

+ + +

From Mike Hughes, FELC Seminarian:  
Greetings from the “Historic Triangle!”

“Walk With God.” This was the theme of the year for the youth group at St. Mark Lutheran Church, Yorktown, VA where I have just completed my year of internship. Some of those youth went on pilgrimage to Santiago de Compostela this past June; others gave of their time and energy to construct a prayer path on the church property, enabling the whole congregation to go on a pilgrimage of a different sort; some participated in the congregation’s team for the Relay for Life; while still others assisted with a children’s ministry event where we explored this same theme through the lens of Micah 6:8—“He has told you, O mortal, what is good; and what does the LORD require of you but to do justice, and to love kindness, and to walk humbly with your God?” (NRSV). What began as a theme for the youth group gradually became the “theme” for so many others in the community at St. Mark; for example, about forty adults “walked” through the Gospel of St. Mark as part of their Lenten “journey.”

While I did not make a pilgrimage to a far-off land to see the bones of a saint, walking with God could still be the “theme” for my year of internship. In wrestling with scripture, journeying in prayer, “walking” with others in their moments of joy and sorrow and all the monotony of life—in all these ways I have been learning how to walk as a pastor. It has been a joy to know that I

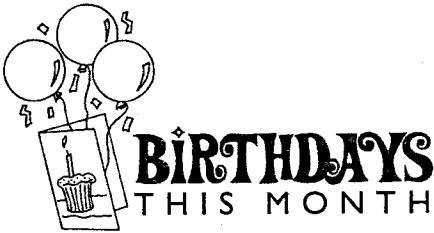
am not walking alone. God, who calls all of us to this journey, has been with me each step of the way. The people of First English and the people of St. Mark have walked with me this year, too, helping me to mark the distance covered thus far, to strive ever onward, and to enjoy the journey. Thank you for your continuing prayerful and financial support—truly, I could not make this journey without you.

Of course, I am not the only one learning how to walk this year; Emelyn has been a visual reminder of how much growing has been done this year. Born a week before I began internship, she is already pulling herself up on furniture and “cruising” around the living room. For all her growth, however, none of it was in a day; it was a gradual process of acquiring knowledge, building strength, testing her legs, falling and getting up again. Sometimes that’s the story of our walk with God—we grow, we step out in faith, we stumble, we gain strength, we fall, and all the while God is with us, there to pick us up, to encourage us, to give us the strength we need to continue this journey upon which Jesus invites us.

My time of internship at St. Mark has come to an end, but the journey continues, as I will be returning to Ohio for my fourth and final year of study for a Master of Divinity degree. I look forward to seeing you again as I make my way through Mansfield in the weeks to come. Until then, may joy and peace be yours as you, too, walk with God.

**MOVING?** Let us know the date of your move so we can keep our mailing data base up to date. The church pays 75¢ per piece if your mail is returned because we don't have an updated address for you.

---



## AUGUST 80+ BIRTHDAYS . . .

We send greetings to our members who are 80+ years of age this month! We extend our best wishes to each of them. Many have been long-time members of our congregation. We honor them for their faithfulness

through the years. God grant His blessing on each of them on their special day.

### AUGUST

23	Mrs. Jane Eggeman	4669 Flowers Rd.	44903-8619
24	Mrs. Katherine Coon	719 Villa Dr.	44906
24	Mrs. Virginia Hanawalt	389 W. Cook Rd., A-5	44907-2346
28	Mr. Harold Simmons	1276 Silver Lane	44906-2465
30	Mrs. Betty Fry	691 Manchester Rd.	44903-1832
30	Mrs. Ruth McCullough	1437 Kissimmee Way, Poinciana, FL	34759

*Editor's note: if you **DO NOT WANT** your 80+ birthday published in The Visitor, please let the church office know, 419-522-0662.*

## From the pastor



## FROM OUR VISITATION PASTOR ...

The story  
of blind  
Bartimaeus

is the story of a young man choosing the good part (Mark 10:46-52). Let us hear his story from his own lips:

Have you ever wanted something badly? I have! You see, I was born blind. My father, Timaeus, was a merchant, and he sold goods in the marketplace. He was good to me, and he often took me with him to the marketplace where I sat listening to the sounds around me. I enjoyed most listening to the merchants who brought goods from far off lands. It was here that I first heard of Jesus.

Over the next three years, I heard many stories of this man as his fame spread throughout all the land. One day Jesus ate at the tax collector's home, Zacchaeus by name. After that experience, Zacchaeus became Jesus' follower, returning all the tax money he collected illegally to those in our city, including my father. When he came to settle up with my father, I listened with great anticipation as Zacchaeus spoke of Jesus; could he heal *me*?

This morning I was seated in my father's booth which is located beside the road leading from Jericho to Jerusalem. I heard a lot of noise, as though someone of great importance was coming along the road. Then I heard someone say that Jesus was coming. If I could get Jesus' attention in order that he might touch me, I knew that I would be healed. So I cried out with the loudest voice

I could, "Jesus, Son of David, have mercy on me!" Those who crowded in front of my father's booth rebuked me, forbidding me to approach Jesus. But I could not be silenced! I continued to cry with a voice filled with tears, "Jesus, Son of David, have mercy on Me!" I heard someone say, "Bartimaeus, take heart; rise, Jesus is calling for you." I sprang up and stumbled toward where I thought Jesus was standing. Many hands helped me, and soon I was standing before Jesus. With a voice filled with concern, Jesus asked, "What do you want me to do for you?" Without hesitation, I pleaded, "O Master, I want to see." Then I heard him say, "All right, it is done. Your faith has healed you." A film seemed to fall from my eyes and suddenly, I began to see light. Then forms and faces of people focused before me. I was so excited I couldn't speak. I could only fall on my knees in worship and awe of Jesus, who had given me my sight. Many who knew me rejoiced with me. My father, who had been in the booth near by, came and embraced me, weeping with tears of joy. It was a moment I shall never forget! As Jesus moved down the road, I was impelled to jump up and run after him. All those who saw this miracle, praised God and rejoiced that I had found my sight.

+ + +

In the 15<sup>th</sup> chapter of John, there is a description of how we might follow Jesus. Jesus uses the illustration of the vine and the branches. Jesus is the vine, and we are the ranches. The branch is a shoot which the vine

puts forth. This branch has one purpose - to bear its fruit. This teaches two lessons. First, the lesson of dependence. Jesus is our spiritual resource.

Louisa May Alcott, the author of *Little Women*, shared a personal experience. One winter evening, when the wood supply was very low, a poor child came to their family's door begging wood. Louisa's father said, "Give half our stock, and trust in God; the weather will either be moderate or wood will come." Later, as the storm raged, a knock came and a farmer who usually supplied wood for their family, appeared saying, "I started for Boston with a load of wood, but I cannot make it. Would you like to have me leave it here?" Louisa's story reminds us of our need to depend on Christ. If we become cut off from Christ, either through a deliber-

ate decision or neglect, our spiritual resources will dry up.

The second lesson of the vine and branches is that of un-doubting confidence. Such confidence is seen in a small boy walking back home from Sunday school. A neighbor hailed him and asked where he was going. "Oh, I'm coming home from Sunday school where I am learning about God." The old man didn't think much of God or Sunday school, so he decided to teach the boy a lesson. He said, "Son, I'll give you a brand new dime if you can tell me where God is." The boy shot back, "Mister, I'll give you a whole dollar if you can tell me where God ain't." We need to have confidence that God will supply our needs. Ask, and it shall be added unto you.

-Cloyd E. Kress, Visitation Pastor

---

## PASTORAL ACTS

Baptism:	June 28, 2009	Autumn Elizabeth Watts, daughter of Trudy Steer and Bradley Watts
Funerals:	June 29, 2009	Susan Bottomley
	July 3, 2009	Helen Boese (graveside)
	July 15, 2009	Henry MacDonald (by VA Hospital chaplain)
	July 16, 2009	Norma Price



**WHEN PLANNING FOR YOUR FINAL RESTING PLACE**, consider our First English Lutheran Church Columbarium. Brochures about our Columbarium are available in the tract racks, or contact the church office, 419-522-0662.

---

## MEMORIALS

### ENDOWMENT FUND

#### **Virginia McBride:**

Jan Beddard  
Sharon Miller-Boivin  
Miriam Rader  
Bernice Campbell  
Tom and Jeanne Hillman  
Wayne and Jennifer Motley  
Miriam Dye  
Virginia Blizzard  
Burdell and Mildred Blaney  
Robert and Frances McBride  
Helen Anderson  
Jack and Geraldine Brandt

### GLOBAL MISSIONS

#### **Norma Price:**

Tom and Jeanne Hillman

### RENEWING GOD'S HOUSE APPEAL

#### **Virginia McBride:**

Wanda Donnan (windows)  
Mary Circle - WELCA (windows)  
Bill and Mary Ellen Schulz  
Ruth Sweval  
John and Pat Fraifogl

### RENEWING GOD'S HOUSE APPEAL

#### **Norma Price:**

John and Pat Fraifogl  
Marilyn Dinges  
David Barnett  
Larry and Marilyn Thompson  
Mr. & Mrs. Roy Hendershot  
Margie Jones  
Violet Oberlander  
Gary and Shirley Lane  
Cloyd and Alice Kress  
Dorothy Nunamaker  
Helen Anderson  
Norma's Neighbors  
Sherry Winbigler  
Lana Conry  
Clara Powell  
Joanne Baumberger  
Jane and Elizabeth Sprang  
John and Jennifer Damm  
Terri Perry  
Lexington Area Senior Citizens, Inc.  
Bill and Mary Schwartz  
Norma's Small Group:  
Stan and Chris Cichanowicz  
Garnet Stafford  
Susanne LeMunyon  
Lois Brown  
Shirley Bender

# RECYCLE RECYCLE RECYCLE RECYCLE RECYCLE

Staples allows FELC to recycle up to 20 ink cartridges per month (that's \$60!) **Bring ANY empty ink cartridges you have to the church office.** A special rewards card must accompany the recycled cartridges, so please do not return them to Staples yourself.

**Take your recyclables to Milliron Industries** and request the proceeds go to **Account #480** First English Lutheran Church-Mansfield. This account supports our missionaries and mission projects:

Henrik & Patty Christopherson, World Mission Prayer League Missionaries;  
Rev Nick & Shannon Kraft and their GO MISSION in Bolivia, South America;  
Brian & Barbara Sorge, World Mission Prayer League missionaries, India;  
Paula Powell, ELCA missionary in South Africa.  
Lithuania Christian College, Klaipeda, Lithuania;  
Rytas Orphanage, Klaipeda, Lithuania;  
Kanyenyeva Orphan Care Ministries, Malawi, Africa;

---

## FIRST ENGLISH LUTHERAN CHURCH E-MAIL AND WEB SITE

Pastor Larson	plarson@felc-mansfield.org
Pastor Jones	ajones@felc-mansfield.org
Pastor Kress	ckress@felc-mansfield.org
Timothy Guenther	tguenther@felc-mansfield.org
Becky Pittman	bpittman@felc-mansfield.org
Karen Frayer	kfrayer@felc-mansfield.org
Betty Guenther	bguenther@felc-mansfield.org
Connie Stewart	cstewart@felc-mansfield.org
Church Office	office@felc-mansfield.org

*Please, no junk mail, cutesy stories, or chain letters.* Reserve the use of church e-mail for important correspondence with the staff. **Visit our web site at: [www.felc-mansfield.org](http://www.felc-mansfield.org)**

*Emergency cell phone numbers if the pastors cannot be contacted at church or home:*  
Pastor Paul Larson, 419-632-1875. Pastor Andy Jones, 419-989-3715.

## MISSION STATEMENT

### First English Lutheran Church, Mansfield, Ohio

First English Lutheran Church exists as a visible sign of the continuing presence of Jesus Christ through his body on earth, the Church. Christ's presence is made known through the ministry of this congregation as:

We regularly worship and experience through the indwelling of the Holy Spirit the vitality of the Word, the assurance of God's acceptance through the divine commands and the earthly elements of the Sacraments, and the fellowship of our brothers and sisters in the faith.

We invite those unfamiliar with the saving grace extended to all who proclaim Jesus Christ as Savior to unite with us and to join us in continually familiarizing all with the Grace of God through our nurturing and caring efforts.

We reach out to the needs of our community and our world in compassion, generosity, and equity. We practice stewardship of our resources (time, talent, and monetary) as responsive expressions of the blessings we have received from the Lord so that the ministry of this congregation will be assured of continuing viability.

---

THE VISITOR is published monthly by First English Lutheran Church, 53 Park Avenue West, Mansfield, Ohio 44902-1698. Church office hours: 8:30 - 4:30 Monday - Friday. Church phone: 419/522-0662. FAX: 419/522-0075. Website: [www.felc-mansfield.org](http://www.felc-mansfield.org). Christian Day School phone: 419/522-7500.

#### CHURCH STAFF

The Rev. Paul L. Larson, Senior Pastor  
The Rev. Andrew W. Jones, Associate Pastor  
The Rev. Cloyd E. Kress, Visitation Pastor  
Dr. Timothy E. Guenther, Director of Music  
Mrs. Becky Pittman, Coordinator of Music and The Arts  
Mrs. Terry Bianchi, Christian Day School Director

Karen Frayer, Bookkeeper	John Meyer, Custodial/Maintenance
Connie Stewart, Parish Secretary/Printer	Jim Scheiber, Property Manager
Betty Guenther, Staff Secretary/Visitor Editor	Nancy Thompson, Nursery Care Worker
Michelle Myers, Christian Day School Secretary	

#### First Lutheran sponsored missionaries

Bolivia, South America: Rev. Nick and Shannon Kraft, and children Madison, Tanyon, Moises, and Tucker  
South Africa: Paula Powell  
World Mission Prayer League Missionaries to India: Brian and Barbara Sorge and family  
World Mission Prayer League Missionaries to Peru: Henrik and Patty Christopherson

#### CONGREGATION COUNCIL OFFICERS AND COMMITTEE CHAIRS

President	Ken Frayer	Personnel	Sherry Winbigler, convener
Vice President	Don Harruff	Property	Shawn Volz
Secretary	Mary Schwartz	Service Ministry	Becky Sarbach
Christian Day School	Linda Elgin	Stewardship	Jan Fisher
Christian Education	Chris Cichanowicz	Worship	Roscoe Thompson, III
Congregational Life	Luella Diday	Youth Ministry	Teri Brenkus
Evangelism	Steve Ritz	SCS Superintendent	Chris Cichanowicz
Finance	Rob Skropits	Women of the ELCA	Cheryl Lantz
Global Mission	Jeanne Hillman		

# August 2009

July

S	M	T	W	T	F	S
			1	2	3	4
5	6	7	8	9	10	11
12	13	14	15	16	17	18
19	20	21	22	23	24	25
26	27	28	29	30	31	

September

S	M	T	W	T	F	S
			1	2	3	4
5	6	7	8	9	10	11
12	13	14	15	16	17	18
19	20	21	22	23	24	25
26	27	28	29	30		

Sun	Mon	Tue	Wed	Thu	Fri	Sat
						1 5:00PM - Holy Communion (Chapel)
2 8:30AM - Worship (Nave) 9:30AM - Fellowship/Coffee 11:00AM - Proclaim! Contemp (UC) 11:00AM - Holy Comm (Nave) 12:00PM - Fellowship/Coffee	3 9:30AM - Men's Group @ Denny's 7:00PM - Property Committee (UC)	4 9:30AM - CDS Chapel 10:00AM - Pastoral Care (FR) 12:00PM - 1 PM Bible Study (ER)	5 8:30AM - Workday Ladies (3rd) 9:30AM - CDS Music (UC) 12:10PM - Worship & Lunch (C/UC)	6 9:15AM - 10:15 Music Therapy (ER) 12:00PM - Bulletin Assembly (3rd) 2:00PM - Staff Meeting (FR) 5:30PM - Proclaim! Praise Team Rehearsal (UC)	7 7:00AM - Prayer Partners (NL)	8 5:00PM - Worship (Chapel)
9 8:30AM - Holy Comm (Nave) 9:30AM - Fellowship/Coffee 11:00AM - Worship (Nave) 11:00AM - Proclaim! Contemp (UC) 12:00PM - Fellowship/Coffee 1:30PM - Private Party (ER)	10 2:00PM - Finance Meeting (FR)	11 9:30AM - CDS Chapel 12:00PM - 1 PM Bible Study (ER) 7:00PM - Council (UC)	12 9:30AM - CDS Music (UC) 12:10PM - Worship & Lunch (C/UC)	13 9:15AM - 10:15 Music Therapy (ER) 12:00PM - Bulletin Assembly (3rd) 2:00PM - Staff Meeting (FR) 5:30PM - Proclaim! Praise Team Rehearsal (UC)	14 7:00AM - Prayer Partners (NL) 11:30AM - Mary Circle lunch @ Rise & Dine	15 5:00PM - Worship (Chapel)
16 8:30AM - Worship (Nave) 9:30AM - Fellowship/Coffee 11:00AM - Proclaim! Contemp (UC) 11:00AM - Worship (Nave) 12:00PM - Fellowship/Coffee	17 7:00PM - WELCA Planning Meeting (ER)	18 9:00AM - Holy Comm (Elmcroft) 9:30AM - CDS Chapel 10:15AM - Holy Comm (Waterford) 12:00PM - 1 PM Bible Study (ER) 2:00PM - Holy Comm (Mifflin Care) 7:00PM - Crop Walk (ER) **VISITOR DEADLINE**	19 8:30AM - Workday Ladies (3rd) 9:30AM - CDS Music (UC) 12:10PM - Worship & Lunch (C/UC)	20 9:15AM - 10:15 Music Therapy (ER) 9:30AM - Holy Communion (Sterling House) 12:00PM - Bulletin Assembly (3rd) 2:00PM - Staff Meeting (FR) 5:30PM - Proclaim! Praise Team Rehearsal (UC)	21 7:00AM - Prayer Partners (NL) 10:30AM - 2:00PM Friendly Friday Srs (ER)	22 5:00PM - Worship (Chapel) Bikers for Jesus - Mulberry Parking Lot
23 8:30AM - Worship (Nave) 9:30AM - Fellowship/Coffee 10:00AM - Sr Choir Reh 11:00AM - Proclaim! Contemp (UC) 11:00AM - Worship (Nave) 12:00PM - Fellowship/Coffee	24	25 9:30AM - CDS Chapel 12:00PM - 1 PM Bible Study (ER) 7:00PM - Worship Committee (ER)	26 9:30AM - CDS Music (UC) 12:10PM - Worship & Lunch (C/UC)	27 9:15AM - 10:15 Music Therapy (ER) 12:00PM - Bulletin Assembly (3rd) 12:30PM - VISITOR Assembly (3rd) 2:00PM - Staff Meeting (FR) 5:30PM - Proclaim! Praise Team Rehearsal (UC)	28 7:00AM - Prayer Partners (NL)	29 *FOOD COLLECTION*
30 9:30AM - Fellowship/Coffee 10:00AM - Combined Worship (Nave) 12:00PM - Fellowship/Coffee 12:30PM - Congo Potluck (UC) *FOOD COLLECTION*	31					

- Legend:**
- BRC - Blackfork Retreat Center
  - C - Chapel in Luther Hall
  - CDS - Christian Day School
  - Ch Rm - Choir Room
  - ER - Emmaus Room
  - First Floor, Luther Hall
  - FR - Fireside Room
  - Second Floor, Luther Hall
  - Nave - Main Sanctuary
  - UC - Undercroft
  - (church basement)
  - 3<sup>rd</sup> - Third Floor, Luther Hall
  - NL - Narthex Lounge



**IS YOUR PLEDGE UP TO DATE?**