

# THE VISITOR



The First English Lutheran Church  
*53 Park Avenue West (at Mulberry Street)*  
*Mansfield, Ohio*

Volume 54

JANUARY 2012

Number 1

**MISSION STATEMENT:** First English Lutheran Church, Mansfield, Ohio

First English Lutheran Church exists as a visible sign of the continuing presence of Jesus Christ through his body on earth, the Church. Christ's presence is made known through the ministry of this congregation as:

We regularly worship and experience through the indwelling of the Holy Spirit the vitality of the Word, the assurance of God's acceptance through the divine commands and the earthly elements of the Sacraments, and the fellowship of our brother and sisters in the faith.

We invite those unfamiliar with the saving grace extended to all who proclaim Jesus Christ as Savior to unite with us and to join us in continually familiarizing all with the Grace of God through our nurturing and caring efforts.

We reach out to the needs of our community and our world in compassion, generosity, and equity. We practice stewardship of our resources (time, talent, and monetary) as responsive expressions of the blessings we have received from the Lord so that the ministry of this congregation will be assured of continuing viability.

THE VISITOR is published monthly by First English Lutheran Church, 53 Park Ave West, Mansfield, Ohio 44902-1698. Church office hours: 8:30-4:30 Tuesday-Friday; closed Monday. Church phone: 419/522-0662. FAX: 419/522-0075. Website: [www.felc-mansfield.org](http://www.felc-mansfield.org). Christian Day School phone: 419/522-7500.

**CHURCH STAFF**

The Rev. Paul L. Larson, Senior Pastor

The Rev. Andrew W. Jones, Associate Pastor

Mr. Scott Berry, Organist and Senior Choir Director

Mrs. Becky Pittman, Coordinator of Music and The Arts

Mrs. Angela Murphy, Christian Day School Director

Karen Frayer, Bookkeeper

John Meyer, Custodial Maintenance

Connie Stewart, Parish Secretary/Printer

Dave Carew, Custodial/Maintenance

Jan Fisher, The Visitor Editor

Jim Scheiber, Property Manager

Michelle Myers, Christian Day School Secretary

**First Lutheran sponsored missionaries**

Go Missions International missionaries to Bolivia, South America:

Nick and Shannon Kraft, and children Madison, Tanyon, Moises and Tucker; World Mission Prayer League

Missionaries to India: Brian and Barbara Sorge and family;

World Mission Prayer League Missionaries to Peru: Henrik and Patty Christopherson

**CONGREGATION COUNCIL OFFICERS AND COMMITTEE CHAIRS**

President Ken Frayer

Personnel open position

Vice President Alicia Schultz Keultjes

Property Gary Lane

Secretary Mary Schwartz

Service Ministry Becky Sarbach

Christian Day School Cindy Russell

Stewardship Jan Fisher

Christian Education Devera Ritz

Worship Roscoe Thompson

Congregational Life Karen Ellis

Youth Ministry Teri Brenkus

Evangelism Susan Hogsette

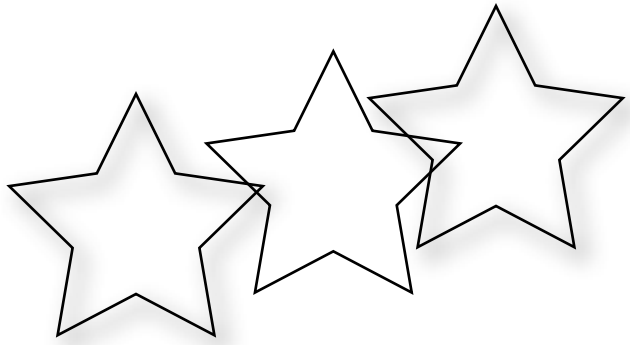
SCS Superintendent Chris Cichanowicz

Finance Don Harruff

Women of FELC Carolyn Weeks

Global Mission Chris Cichanowicz

# WHAT'S EPIPHANY?



## Dear Friends in Christ:

What is Epiphany (e PIF ah nee)? Is it relevant today? *Epiphany*, a Greek word means *to shed light upon - to show forth – Revelation!*

The celebration of Epiphany, one of the festivals of Christ's Church, originated in the eastern Mediterranean world. Its purpose was to honor Jesus' baptism. After its introduction into the Western Church in the fourth century, the theme emphasized the visit of the Wise Men (Magi), as recorded in Matthew 2:1-12.

*<sup>1</sup> Now after Jesus was born in Bethlehem of Judea in the days of Herod the king, behold, wise men from the East came to Jerusalem, <sup>2</sup> saying, "Where is He who has been born King of the Jews? For we have seen His star in the East and have come to worship Him." Matthew 2:1-2 (NKJV)*

Here we learn of the star that led the Magi (foreign-pagan-astrologers ... probably from the region of ancient Babylon) to come and worship Jesus. *<sup>11</sup> And when they had come into the house, they saw the young Child with Mary His mother, and fell down and worshiped Him. And when they had opened their treasures, they presented gifts to Him: gold, frankincense, and myrrh. (Matt. 2:11)*

The Holy Scriptures record a dream from God, warning the Magi not to return to Herod, which they obeyed. As the Magi left Bethlehem, they told others about the Miracle of the Savior's birth. They became believers and proclaimers or tellers of the story of Jesus.

**Today, churches worldwide celebrate Epiphany - as the Coming of the Wise Men on January 6.** White altar cloths are used for the day of Epiphany, expressing the purity and joy in seeing Jesus. Green is used throughout the Epiphany season, symbolic of new life and growth. **Light** is the predominate theme reminding us of the light of the Bethlehem Star that led foreigners to come and worship Jesus – the Newborn KING!

In the Christmas Season we celebrate the birth of Jesus and the Miracle of the Incarnation (God Himself – Come-in-the-Flesh!) During the Season of Epiphany our Gospel lessons respond to our many questions: "Who is this babe, wrapped in swaddling clothes, lying in a manger?" Epiphany is the Season of Revelation in

which we come to know Jesus.

The challenge of Epiphany remains. Tell the story of, or “show forth” the Lord Jesus in teaching, talking, living, thinking and attitudes. It begins with a star-led journey to Bethlehem to find Jesus personally. Then “showing forth” the love of Jesus through compassion, understanding, patience, forgiveness and long-suffering to the people in your daily life.

On that first Epiphany, God used a star to lead those outside the People of Israel to come and worship Him. Now, God calls each one of us to “shine forth” the Good News of His Love in the witness of our daily lives – so that the world might know Jesus!

May the light of Bethlehem’s Star lead each one of us into new opportunities to share with others the Good News of Jesus, our only Savior and Lord! ***Pray*** for these new opportunities; ***Share*** Christ’s Love through your words and deeds; and ***Invite*** both friends and strangers alike to come and worship Christ our Savior and King!

As Jesus, Himself, commanded us: ***“You are the light of the world! ... Let your light so shine before others that they may see your good works, and glorify your Father in heaven.”*** (Matthew 5: 14-16). This Epiphany be a STAR for Jesus!

**In Christ’s Love,**

**Pastor Paul**

*How much of Eternity*

*Is in what I am Doing Today?*

I know that most of you have already heard me talk about how much I enjoy my **Daily Walk Bible**, but it is Good News that I just can’t keep from sharing. For the longest time, my experience of reading through the Bible was filled with way too much frustration. I lost track of the number of times that I had (with all good intentions) committed myself to “Daily Bible Reading – With the GOAL of Reading through my Bible in a Year.” It is a great goal, but I failed at it TOO many times to count. Somewhere along the way, I would suddenly run into a whole string of crazy busy days. Suddenly, I would realize that I was hopelessly behind! Catching-up would look so overwhelming --- I must confess that I would just give up.

But now, I have found a devotional Bible that has really made a difference in my life. It is called The Daily Walk Bible by Tyndale Press. What makes this one different? It is arranged with “365 Daily Devotional Helps to Guide You through the Bible in One Year.”

Does this mean that now, for the first time, EVERY single day, I complete my Daily Bible Reading Goal? ... NO! But there are two important differences in the way THIS devotional Bible is set-up.

**First of all**, the readings are not numbered from 1 to 365. Instead, they are divided by the days of the year and marked accordingly, for example: “June 1<sup>st</sup>, June 2<sup>nd</sup>, etc.” So if you get out of the daily rhythm for a few days, or a few weeks, ...or even a few months, you DON'T start where you left-off and try to catch-up. This is where most of us feel overwhelmed & give-up. Instead, you just jump back in. If you didn't get to your daily Bible reading ... GOD still Forgives! So... Receive His Forgiveness & Grace! And Embrace His Gift of a NEW Beginning and Start Again Today! **It is the difference between letting oppressive Guilt defeat you and embracing God's Grace to inspire you! I prefer GRACE!**

**Secondly**, and The VERY BEST thing about this great Bible, is the Daily Devotional Thoughts that preface each Daily Scripture Reading. This will now be my 8<sup>th</sup> year of doing this→ But I continue to find myself learning things I never knew! God's Word continues to come ALIVE in exciting new ways. I am experiencing the Blessing of growing closer to my LORD as I hear Him speak to the realities of my life as I read His Word. Pastor Nicky Gumbel in the ALPHA course states:

“God still speaks today through the Scriptures. He may speak to us as we read. The psalmist says, ‘Your statutes ... are my counselors’ (Psalm 119:24). That is not to say that we find God's will by opening the Bible anywhere at random and seeing what it says. Rather, as we develop the habit of regular, methodical Bible study we begin to find it quite extraordinary how appropriate each day's reading seems to be for the particular circumstances in which we find ourselves. Sometimes the verse

seems to almost leap off the page at us, and we sense GOD speaking through it."

I began this note to you with a quote from the daily devotional for MAY 14<sup>th</sup>: "*We must ask ourselves: How much of Eternity Is in what we are Doing?*" So many people, events, obligations, and organizations will compete for your Time, your Talents, and your Commitments in 2012. There are equally as many causes, and organizations, and things that will compete for your money. I would invite you Today to ask yourself: "*How much of Eternity Is in what I am Doing?*" I believe that daily spending time with your LORD in His Word is an important way to begin.

Together In His Service,

Pastor Paul L. Larson

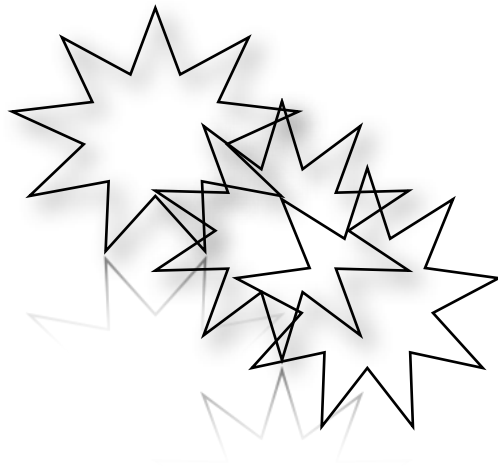
You Can  
Read Through the BIBLE  
In One Year

**So Here's the INVITATION!**

→ *First, This is not about being a Bible expert and having all the answers. **This is about having a hunger for God and His Word. This is about being eager to learn.** If you want a weekly place where you can ask questions about what you have read in your Bible during the last week, I will again be meeting with you in The Emmaus Room on Tuesdays over the Lunch Hour (12:00-1:00pm).. Bring your Bible and a Sandwich if you like. Invite a friend or co-worker. If your schedule changes, don't worry, just come when you can.*

This is a great time to ask questions and grow together in our understanding of God's Word for our daily lives.

- *Secondly*, If you would like to join me in this wonderful “*Walk Thru the Bible*”, we have made arrangements so that you can purchase a copy of **The Daily Walk Bible** at a special discount price of \$25 for hardbound. Check with the church office.
- *Thirdly*, Don't worry about understanding everything that you read. None of us do! This is not about Bible quizzes. This is about spending time with your Lord Jesus in the Gift of His Word. This is about GRACE!
- *Fourthly*, Don't worry about getting behind. I think almost everybody does. If you do get behind, (and most of us do) just jump back in again! Remember → This is about GRACE!
- *Fifthly*, This is the BEST thing I have done for myself to intentionally grow in my relationship with my Lord Jesus. I have every confidence that it will continue to be the BEST thing I do in 2012. Even if you can't join us for our discussion times, I know that you too will still be wonderfully BLESSED to be more and more in God's Word.



# **The STAR of BETHLEHEM!**

*Unlock the Mystery*

*Of the World's Most Famous Star!*

**Movie Night at First English Lutheran**

**Friday, January 6, 2012 at 7:00pm**

On Friday evening, January 6<sup>th</sup> at 7:00pm we will be having a special movie night at First English Lutheran. We will be meeting in the Emmaus Room to view “**The Star of Bethlehem.**” Pastor Paul writes: “This is one of the most fascinating movies I have seen that connects hard science with the Truth of God’s Word. I have checked the astronomy used in this presentation with my daughter (the PhD student in astronomy) and the information is solid scientific fact. In Psalm 19:1 we read “**The heavens declare the glory of God, and the sky above proclaims His handiwork.**” This I now realize is not just symbolic, poetic language. We are to take these words literally! You will be amazed!”

Scholars debate whether the Star of Bethlehem is a legend created by the early Church or a miracle that marked the advent of Christ.

Is it possible that the star was a real, astronomical event?

From producer Stephen McEveety (The Passion of the Christ) comes an amazing documentary on the Star of Bethlehem. This presentation, as seen by tens of thousands in the U.S. and in Europe, explores the exciting truth of Scripture and reveals the evidence for God's existence as seen in the stars above. Using solid facts from the scientific field of astronomy, presenter Rick Larson walks you through biblical and historical clues revealing the incredible significance of this celestial event as well as the wonder and majesty of God's creation. Discover the secret of the Star – a secret of magnificent beauty. And there is even more! What about signs in the heavens at the moment of Jesus death on the cross? You will be amazed! See what God has written into the very fabric of the cosmos from the dawn of His creation! Feel free to bring popcorn or your favorite "movie snack" and some pop.

## **MEMORIALS**

### **MEMORIALS – MEMORIAL FUND**

#### **Mildred Them**

Larry and Monya Barr

### **MEMORIALS – WEDNESDAY NOON LUNCH PROGRAM**

#### **Mary LaBrie**

Gary and Shirley Lane  
Ken and Vi Deems  
The Gottfried Family

### **MEMORIALS – WFELC FUNERAL DINNER MINISTRY**

#### **Mary LaBrie**

Dennis and Polly Davis  
Will and Dolores Esler  
Larry and Mary Rush  
Frank and Patty Wise  
Martha Wilson  
Jim and Carol Wilson  
Helen Cross

### **MEMORIALS – RENEWING GOD'S HOUSE**

#### **Mary LaBrie**

Wes and Sandie Volz

## PASTORAL ACTS

**Funerals/Memorial:** December 9, 2011 Jerry Eckstein



### OUR SINCERE SYMPATHY

We remember the families and friends of those who died November 15-December 13.

<b>Frank Reinoehl</b> <i>uncle of Dave Carew</i>	<b>November 26</b>
<b>Mary LaBrie</b>	<b>November 27</b>
<b>Jerry Eckstein</b> <i>brother of Shelley Fisher</i> <i>son of the late David &amp; Marilyn Eckstein</i>	<b>December 4</b>
<b>Michael Kilgore</b> <i>father of Jeff Kilgore</i>	<b>December 7</b>

We pray for Christ's gifts of healing and peace to touch their lives during this time of loss and sorrow that they may be comforted with the promise of the Resurrection through faith in Christ our Savior.

# WOMEN'S MINISTRY

## WOMEN'S CALENDAR

Circle	Date	Time	Place	Hostess
Eve (Prayer Shawl)	Tues Jan 3	7:00 PM	Emmaus Room	TBA, please join us for knitting or crocheting of shawls
Sarah	TBA due to New Year's Holiday	1:00 PM	Emmaus Room	Margaret Battisti, hostess; Kay Jewitt, Proverbs Bible Study
Lydia	TBA in bulletin			Fellowship
Mary	No longer meeting			
Women's Ministry Team Meeting	Monday Jan. 16,	1:30 PM Note new meeting time.	Emmaus Room	Officers and Circle Leaders attend
Workday Ladies	Jan. 4 and Jan. 18	1:00 PM to 4:00 PM	Third Floor	No hostess. All women are welcome to join us!

Funeral Squad Leader for January: Margaret Battisti

### Women's Ministry Supports "Join My Village"

"Join My Village" was able to raise \$900,000 for Malawi. This online project is sponsored by Merck, General Mills, & Care. They met their goal for 2011. Awesome!

Next year their goal is One million 500 thousand dollars to benefit the people of Malawi.

They provided 300 scholarships to girls to continue their education. They built 15 houses for new female teachers. This will benefit 5,000 primary students. 2,000 families were positively impacted. Girls count with "Join My Village".

For 2012 you may follow and participate with Join My Village on Facebook. By making a computer "click" you are participating at no cost to you! Please go online and CHECK IT OUT!

Greetings,

From July 24-28, 2011, a group of people from the Church of the Good Shepherd, United Church of Christ, Boyertown, PA spent a week in service at the Brethren Center, New Windsor, MD. We worked for SERRV for three days and at the Material Resource Center, packing boxes for Church World Service and Lutheran World Relief for two days.

We decided that it might be nice for the original donors of the materials we processed to know how their donations have progressed, and perhaps would enjoy a message of Christian fellowship and service.

We at Good Shepherd would like to thank you for your generosity, and for the opportunity to glorify the Lord by helping others. We are His hands and feet and together we have made it possible for those in need to be served.

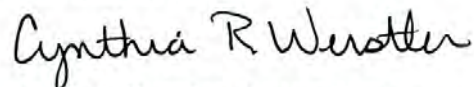
If you have never experienced the process, we unpack the kits you sent and repack them into large boxes at the Resource center for future shipment.

We wrote down the names and addresses of the churches from the donation boxes, and so here is our greeting to you.

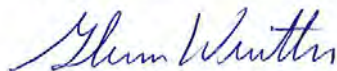
We at Good Shepherd UCC are celebrating our 200<sup>th</sup> anniversary this year, along with our sister church, St. John's Lutheran. We were a union church from 1811 till 1873, sharing one church, but in 1873 each congregation built a new building. We have continued to prosper as neighbors, less than a block apart. In fact, we share a parking lot that was donated after the dismantling of a large casket-making factory in the 1980's.

As Thanksgiving and Advent approach, we give thanks and honor to the Lord, and share our joy at helping you in your mission work.

In Christian Love,



Cynthia R. Werstler, Mission Team



Glenn Werstler, Consistory President



35 W. Phila. Ave., Boyertown PA 19512

# Alpha is here

## again at First English!

**LATEST REPORT:**  
The **Alpha** course at **First English Lutheran Church** is a fabulous success! Ask any question during the 10 weeks of basic Christian teachings and small group discussions. Come to a meal and introduction to the course on **January 8**. No commitment is expected.



January 8 through March 25, 2012

Sunday Afternoons from 11:30am until 2:00pm

The Alpha course is a **FREE** 10 week journey of delicious dinners, thought provoking talks and welcoming small groups where you can ask any question (plus a bonus retreat day).



## YOUTH NEWS

### Apple Tree Returns in January

In January you will find the "Apple Tree" to sponsor food for our youths' upcoming journey to Quake and Zone. Each apple is a \$15 sponsorship with the child's name on the front - you fill in the info on the back and turn it in to the office with your \$15 food sponsorship money. On the tree there will also be gas tags at \$25 for the chaperones who donate their time to drive & chaperone our excited youth to each event. Thank you for your *tremendous support* of our youth at FELC, we could never do it without you! Eleven middle schoolers will be going to Quake Feb. 10-12 and ten high schoolers will be going to Zone Feb. 24-26.

### Christmas Cookie Bake Sale

Thank you to everyone who so willingly supported our Annual Youth Bake Sale held on December 18th. It's a wonderful thing to have so many youth involved in our youth programs here at FELC, consequently we are continually needing to think of creative ways to raise funds. Thank you again and again! These fundraisers make it possible for EVERY child who has an interest in going to our youth events possible. Please know many of our youth would not be able to attend without your support which we are all grateful for.

---

The FELC Youth Group would like to say THANK YOU to all of the wonderful people (Jan Fisher, Karen Ellis, Ted Ellis, Lu Diday, and Carol Lauthers ) who made the **Mystery Dinner** possible and a HUGE success. Many of our youth learned a lot about serving others (literally) that night along with learning how to speak a little Italian :) Much fun was had by all who attended.



## **DECEMBER COUNCIL NOTES:**

President Ken Frayer called the December 13, 2011 meeting of the First English Lutheran Church Congregation Council to order at 7:05 p.m. Karen Ellis opened the meeting with prayer.

**Dan Obrynba** spoke to Council about plastering and painting of the sanctuary. He has talked with several contractors, most not interested in the job. He presented a quotation from Kurt Kuncel of Bauhaus Building and Stone, LLC of Wakeman, OH. The \$85,000 quote includes preparation, plastering, scaffolding rental and abatement of any lead paint for work on the back half of the sanctuary. A \$10,800 quotation from Reining Painting for the same area was received. This area would be enclosed and inaccessible during the work time of 60 to 90 days. Discussion included concern that the sound booth and power point control are in that space. Also mentioned was concern about Easter worship services and weddings scheduled in May and September.

**Tom Pasheilich** discussed concerns about the sanctuary roof because tabs are missing from some shingles and shingles are missing from the bell tower. Tom Pasheilich gave information about the undercroft kitchen fire suppression hood with no firm solution at this time. We have been working with Air Solutions of Ohio which has involved an architect in hopes of making progress on the project. Dan Obrynba said he will contact a mechanical engineer to give a second opinion.

Council members expressed appreciation to Dan Obrynba and Tom Pasheilich for their work. It was felt by Council that more information needs to be received on all of the above before the Council can move forward. Dan Obrynba and Tom Pasheilich will continue to keep the Council updated as new information becomes available.

**SENIOR PASTOR: Pastor Larson** stated that, as of December 31, 2011, the ELCA will no longer allow NALC rostered pastors to participate in their Board of Pensions program for retirement, health and disability insurance. Pastor Larson and Pastor Jones' retirement, health and disability insurance, will be through the NALC, effective January 1, 2012. Pastor Larson was elected to the NALC Ohio Mission District Executive Council and has also been asked to serve as one of 5 Assistants to the Dean of the Ohio Mission District. Pastor Dan Powell is the Dean of the Ohio Mission District of NALC. There are over 50 congregations in the Ohio Mission District of the NALC. It is the largest Mission District in the NALC. This volunteer position as Assistant to the Dean will involve working with 12 NALC congregations in our area.

**ASSOCIATE PASTOR: Pastor Jones** said a new Alpha course begins Sunday,

January 8 and encouraged all to invite others to Alpha and to accompany them to the meetings.

**FINANCE: Ken Frayer** reported that our church is in a better financial situation than in previous years with thanks expressed to Council and FELC members. Ken distributed copies of the 2012 budget. The Budget included the recommendation from the Personnel Committee that there be a COLA (Cost of Living Increase) of 3% for all staff salaries in 2012 and a \$1000 additional pay increase for Becky Pittman, Coordinator of Music and the Arts. It was noted that all staff salaries were frozen during the last three years. Council approved participation in the Stephen Ministry Program with funds for leader training coming from the New Ministries and Missions Endowment Fund and included in the 2012 budget. Council approved the 2012 budget which will be presented to the Congregation during the January 29, 2012 Congregational meeting. It was emphasized that this is a balanced budget.

**CONGREGATIONAL LIFE: Karen Ellis** reported that the mystery dinner was a huge success. Fifty seven tickets were sold and 30 youth helped with many of the tasks for the meal. Proceeds of \$1105.00 from the meal were split 2/3 for our youth and 1/3 for Salvation Army. Excellent feedback indicated that this event should be held again.

**EVANGELISM: Susan Hogsette** stated the Council Discipleship Retreat is planned for Saturday, March 3, 2012 from 9:00 a.m. to 3:00 p.m. in the Emmaus Room. She asked Council members to look for the FELC Christmas message on WMFD-TV and WMFD.com. It is part of a series of church Christmas messages that are played at two minutes before the hour on cable channel #15. Pastor Jones spoke of the good job Pastor Larson did in recording this message.

**GLOBAL MISSION: Chris Cichanowicz** said the Christophersons sent pictures of their missionary work which will be on display in the Narthex.

**WORSHIP: Pastor Larson, for the Worship Committee,** recommended and Council approved holding a combined worship service on Sunday, January 1, 2012, with communion, instead of celebrating communion on January 8, as approved in the November 8, 2011 Council meeting. There will not be a potluck meal on January 1. Services on January 29<sup>th</sup> will not be combined.

**STEWARDSHIP: Jan Fisher** reported 98 pledge cards were received with pledges totaling \$254,218.00, which is approximately \$8000 more than last year.

**SERVICE: Becky Sarbach** received a letter of appreciation from the Domestic Violence Shelter to our congregation for donation of 20 multi-packs of toilet paper.

**CHRISTIAN EDUCATION: Devera Ritz** mentioned there will be no Sunday

School classes on December 25, 2011 and January 1, 2012.

**YOUTH: Teri Brenkus** presented information that the youth received \$736.00 from the Mystery dinner. Each young person who worked that evening received \$26.28 in their account for activities. There are 6 boys, 5 girls and 3 chaperones attending Quake and 5 boys, 5 girls and 2 chaperones attending Zone. The summer mission trip will be held June 18 to 22, 2012 at Recreation Unlimited. Council approved the use of the \$3600 in the New Ministries and Missions Endowment Fund, in the 2012 budget, toward the Recreation Unlimited expenses, with funds not needed to remain in the fund.

**CHRISTIAN DAY SCHOOL: Cindy Russell** stated there are 62 students enrolled in CDS and there were no staff changes.

**NEW BUSINESS:** Council approved the 2012 compensation packages for Pastor Paul Larson and Pastor Andy Jones, pending Congregational Approval of the 2012 Annual Budget. The IRS requires Council action on Clergy Compensation Packages in December for the following year.

Mary Schwartz was appointed Statutory Agent for 2012.

**ADJOURNMENT:** This meeting adjourned at 9:45 p.m. with prayer by Pastor Jones and all praying the Lord's Prayer.

*Mary M. Schwartz*, Secretary  
First English Lutheran Church Congregational Council

**CONGREGATIONAL  
BUDGET MEETING**

Sunday, January 29, 2012  
11:15 a.m. in the Nave

**Agenda:** Presentation and vote, Proposed 2012 Budget

The Proposed 2012 Budget is printed on the insert page in the middle of this  
January Visitor.

PLEASE BRING THE PROPOSED 2011 BUDGET PAGE TO THE MEETING.

*Only agenda items announced in this notice may be considered at this meeting.*

THANK YOU, THANK YOU, THANK YOU!

**Within The Fold**

**THE NOVEMBER FOOD COLLECTION** totaled \$341.13 for our Wednesday Noon Worship and Lunch program. Five large bags of grocery items and canned goods were collected Sunday, November 27, which were donated to Salvation Army. Thank you for helping those less fortunate!

\*\*\*\*\*

To: First English Lutheran Church Thank you for your generous donations of food to Catholic Charities. Your support enables us to provide programs and services to the many in need throughout our community! *Rebecca Owens, Director*

\*\*\*\*\*

Dear Ladies, I can't begin to tell you how much we appreciated the lunch your provided for us (after Mary LaBrie's funeral.) It was a real life saver. Mom really missed working on the Wednesday Noon Lunches, and I'm sure she is helping up in heaven. Keep up your wonderful work. Love, *Jerry and Anita Wilson and family* (Mary LaBrie's daughter and family)

\*\*\*\*\*

The cookies were such a pleasant surprise. The carols were so welcome & enjoyed so much! We really are blessed to be remembered at this special time. We wish peace & good health to all of you. Christmas Blessings & love, *Jim & Emmie Shaum*

\*\*\*\*\*

Thank you from the Domestic Violence Shelter. It was a blessing to receive 20 multi-pack containers of toilet paper just after Thanksgiving. We really appreciate how you at First English support us! Thank you again.

\*\*\*\*\*

Dear Sisters and Brothers in Christ, Our hearts are full of joy and gratitude for your beautiful expressions of Love. Thank you, thank you for all your support and kindness during Dad's journey with stroke. Each one of you has been such a blessing! God sent just the right words of

encouragement or required information/referral or a beautiful, warm smile or a comforting card or a big hug or a nurturing meal or a physical task done at just the right time. You were his messengers, his angels of mercy. Your prayers, your presence, your follow-up has made all the difference in our lives. Thank you. God Bless you and your families this beautiful Advent season. Cloyd and Alice, Dave and Rebecca Kress

Our church is so blessed to have so many generous and caring members. This is an open "Thank You" to one such member who wants to remain anonymous, but I think you should know about a wonderful gift that was recently given me to give to the children of our Wednesday Noon Lunch guests. A couple of weeks ago this member gave me a sack of tokens to ride the carrousel downtown. It is such fun to hand out the "gold coins" to the children and watch the smiles on their little faces. A big "Thank You!!!" to the special person from the children and from me!!

*Shirley Lane (Shirley is the greeter in the Emmaus Room for our WNL guests.)*

*Global Mission News*



We are so excited about this weekends evangelistic event we can hardly contain ourselves... God moved in amazing ways and a new church was planted in the city of Piura.. We spent four days going door to door and evangelizing in the park with a big campaign. We did a womans tea a children's program and left 30 new converts and a Pastoral team to begin the church.... God is so good..... we couldn't wait to share it with you...

Shannon and Nick Kraft in Peru.

--

**Go Missions International**

**Sobre Todo Amar y Servir ... Above all Love and Serve**

## Malawi Orphan Care Ministries

*Dear Friends in Christ,*

*We would like to thank you for your generous support of our mission trip to Malawi. Please ask in the church office for your thank you notes.*

*Sincerely,*

*Sarah Ward, Robyn Russell, and Sarah Jones*



### News from Shadreck Chikoti

Recently, Shadreck sent an email to let us know that the bracelets that the women have made are done. They will be sending them to us in the next few months. We will let you know when they arrive. We are excited to see what the women have done and to be able to help them earn an income by selling the bracelets here in the US.

Shadreck also let us know that one of the women who cooked for the orphan project has died. Her name is Elita Jeradi. She and her children had been an active part of the project from the beginning. She has 7 children ranging in age from 7 – 20. The younger six children are still a part of the program. Shadreck writes that the oldest, a daughter, got married and ran away with a man last year since her family could not fully support her. Please continue to pray for the orphan project and especially for Elita's children and their new caregivers.

Submitted by *Joy Jones* for the Malawi Mission Team

## CDS January Newsletter

Our Bible theme for this month is: "...we have seen His star in the east and have come to worship Him." (Matthew 2:2) We would like to welcome everyone back from the Christmas break. The children will be ready to work on letters, numbers, colors and shapes. They will also be learning about Martin Luther King Junior this month, penguins, space and snow.

We would like to thank Becky Pittman, Cindy Russell, Chris Cichanowicz and everyone that attended the Christmas concert. The children did a great job and we donated the canned goods collected to a family in need. The children also sang for Sarah Circle and the Friendly Friday groups. We at CDS wish everyone a Happy New Year.

God Bless  
Angela Murphy



## JANUARY VOLUNTEERS 10:00 A.M. TRADITIONAL WORSHIP

<u><b>GREETERS</b></u>	<u><b>NAVE</b></u>
Entire month of January: Mary Shaffer	

<u><b>USHERS</b></u>	<u><b>NAVE</b></u>
Bill Schwartz	Mary Schwartz
Larry Goracke	Charlene Goracke

<u><b>8:30 AM SUNDAY PASTORS</b></u>	
<u><b>PRAYER PARTNERS TEAMS</b></u>	
January 1	Rob Hogsette, Steve Ritz
January 8	Mary Schwartz, Jim Scheiber
January 15	Ken & Karen Frayer
January 22	Lowell Weeks, Chris Cichanowicz
January 29	Rob Hogsette, Steve Ritz

<u><b>COMMUNION</b></u>	<u><b>PREPARERS</b></u>
January 1	Steve & Devera Ritz

<u><b>COMMUNION</b></u>	<u><b>SERVERS</b></u>
January 1	
Bread Servers Pastor/Assisting Minister	
Wine West	Donna Rettig
Cups West	Larry Goracke
Wine East	Alicia Schulz
Cups East	Linda Hughes
Intinction	Greg Hughes

<u><b>COFFEE FELLOWSHIP HOSTS</b></u>
Property Committee

<u><b>ALTAR WORKERS</b></u>
Nave: Karen Frayer
Proclaim!: Jan Fisher

<u><b>LAY READERS</b></u>	<u><b>NAVE</b></u>
January 1	None needed
January 8	Sherry Winbigler
January 15	Chris Cichanowicz
January 22	Chris Kaschube
January 29	Shirley Lane

**PEW PAD GLEANERS**

January 1 Ronda Rehm

January 8 Lana Conry

January 15 Vi Deems

January 22 Sharon Bowden

January 29 Gene Luedy

**ASSISTING MINISTERS**

January 1 Alicia Schulz

January 8 Alicia Schulz

January 15 Stan Cichanowicz

January 22 Greg Hughes

January 29 Chris Kaschube

**ACOLYTES**

January 1 Open

January 8 Taylor Grossenbacher

January 15 Jake Caseman

January 22 Erica Kick

January 29 Egypt Griffith Murphy

**CHILDREN'S CHURCH LEADERS**

January 1 TBA

January 8 Amy Skropits

January 15 Suzanne Rippel

January 22 Kristlyn Brock

January 29 Sharon Bowden

**NURSERY VOLUNTEERS**

January 1 No Sunday School  
No Nursery

January 8 Angie Murphy (9:00)  
Toni Zehe (10:00)

January 15 Stacey Crall (9:00)  
Courtney Farnier (10:00)

January 22 Alicia Schulz (9:00)  
Teri Brenkus (10:00)

January 29 Annette Doklovic (9:00)  
Rachelle Zehe (10:00)

**LUTHER HALL SUNDAY DOOR MONITORS**

**8:40 to 10:05 am**

January 1 Henry Keultjes

January 8 Tom Hillman

January 15 Wes Volz

January 22 Jodi Mumaw

January 29 Shirley Shupp

# 10:00 A.M. PROCLAIM! CONTEMPORARY WORSHIP

## **GREETERS/USHERS**

January 1 Combined Worship in Nave

January 8 Sarah Jones &  
Elizabeth Volz

January 15 Cindy Russell &  
Rachel Shupp

January 22 Gregg & Kayla Thatcher

January 29 Ted Ellis & Haley Pittman

## **POWERPOINT ASSISTANTS**

January 1 Combined Worship in Nave

January 8 Haley Pittman

January 15 Robyn Russell

January 22 Nolan Thatcher

January 29 Kayla Thatcher

## **BEVERAGE PREP/CLEAN-UP**

January 1 Combined Worship in Nave

January 8 Jan Fisher

January 15 Karen Ellis

January 22 Ronda Rehm

January 29 Gregg Thatcher

Volunteer Scheduling Contacts	The monthly volunteers are published in Visitor and posted on bulletin boards.
<b>Worship Committee</b> <b>Devera Ritz</b> <b>419.362.6526</b> Acolytes <b>Cindy Russell</b> <b>419.544.0878</b> Assisting Ministers and Lay Readers	<b>Gene Luedy,</b> <b>419.526.4304</b> Pew Pad Gleaners
<b>Beth Harruff,</b> <b>419.589.2762</b> Communion Preparers, Communion Assistants Nave	<b>Ruth Sweval,</b> <b>419.526.5090</b> 8:30 AM Sunday Prayer Partners
<b>Gene Harsch,</b> <b>419.774.0247</b> Ushers	<b>Becky Pittman,</b> <b>419.529.3876</b> Proclaim! Ushers/ Greeters Proclaim! Communion Preparers Proclaim! Communion Assistants
<b>Evangelism Committee</b> <b>Susan Hogsette</b> <b>419.884.1446</b> Greeters	<b>Paul Ward,</b> <b>419.884.3324</b> Power Point, Nave

Volunteer Scheduling Contacts	The monthly volunteers are published in Visitor and posted on bulletin boards.
<b>Property Committee</b> <b>Gary Lane</b> <b>419.775.8822</b> Luther Hall Sunday Door Duty	<b>Becky Pittman,</b> <b>419.529.3876</b> Children's Church Leaders
<b>Gary Simmons,</b> <b>419.529.3396</b> and <b>Dan Shupp</b> <b>419.589.7631</b> Sound Board/Audio	<b>Chris Cichanowicz,</b> <b>419.529.6593</b> Sunday School Superintendent



## **A Message from our caring group of Communion Deacons and home visitors.....**

If you know of anyone who wants a Communion Deacon to give Communion to them in their home, or if you just want a home visit, please contact the Church Office or call Larry Lantz at 419.756.5506. *Larry Lantz, Coordinator*

Beth Harruff has offered her services to be the pianist at the Nursing Home Services. We would like to have a substitute when she cannot make it to a service. Anyone who can play the piano and would like to volunteer please contact Larry Lantz at 419-756-5506.

### **Nursing Home and Assisted Living Communion Services**

January 17, 2012	Tues. 9:00 AM	Elmcroft
January 17, 2012	Tues.10:15 AM	Waterford
January 19, 2012	Thurs 9:30 AM	Brookdale Sterling House



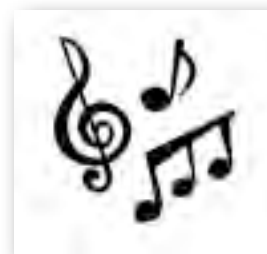
**DID YOU MAKE A NEW YEAR'S RESOLUTION TO GET FITTER?** Wonderful! Now plan to do something to get your marriage in better shape, because that take daily exercise as well. Find out more about Lutheran Marriage Encounter and the weekends for couples it sponsors, coming up March 23-25 at Our Guest Inn & Suites, Port Clinton and then October 12-14 at Camp Mowana's Fleming Falls Retreat Center in Mansfield. Reserve your place for \$45. Contact Duffy & Nan Guthrie 440/599-9090 or [nguthrie@suite224.net](mailto:nguthrie@suite224.net), or register online at [GodLovesMarriage.org](http://GodLovesMarriage.org)

### **Christmas Caroling -- A really fun "outreach"**



There were about 25 to 30 of our church members who gave of themselves on Sunday December 11, 2011 going Christmas Caroling. Our older homebound members really love it when a group comes to them singing various Christmas carols! It is a bright spot in their lives, and it shows them that they are loved and not forgotten. Their faces light up, they join in the singing, and they hate for us to leave. They especially love to see some of our kids in the caroling group! If you have never done this, please think about joining us the next time we carol. It will bring joy to your heart! **And many, many thanks to Angie Kaschube for laying out the routes and contacting our homebound members.**

### **New Choir Practice Time is Successful**



Have you noticed that Senior Choir has grown since they started practicing after church on Sundays? Sometimes it's hard to make a change, but change becomes the "best thing." Thanks to everyone involved and to those who were willing to change. It's not too late to join the choir! We have room for YOU and would welcome you with open arms.

*Scott Berry, Director*

NALC Newsletters



Excerpts taken from the webpages of the North American Lutheran Church. Web address is: [www.thenalc.org](http://www.thenalc.org)

When you get a chance please check out the exciting updates that are shown there. Presently there are 296 congregations that have joined the North American Lutheran Church in just the last year! Praise God!

## Latest Newsletters



*Dec, 2011*

- Pastor David Wendel is called as NALC Ministry Coordinator
- Becky Seifert joins staff of NALC
- Advent message from Bishop Bradosky
- Congregational leaders gather in North Carolina for Revitalization Conference
- In Pursuit of the Great Commission

Keep up to date with happenings throughout NALC

The North American Lutheran Church publishes a monthly newsletter which includes useful updates on the projects, programs and developments that matter to Lutherans. Come back each month and download a copy.

## Church Relations

The NALC is welcomes articles related to the exciting happenings taking place across the wider church. If you have an article detailing church-life from your mission field feel free to submit it for consideration for an upcoming NALC Newsletter.

Rev. David J. Baer

Editor, NALC Newsletter

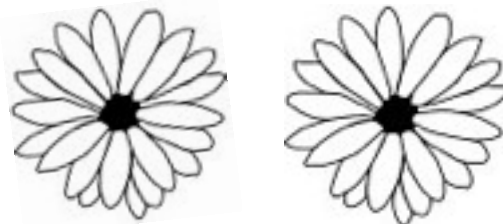
[news@thenalc.org](mailto:news@thenalc.org)

## Stewardship Corner

Thank you to everyone in the congregation for your generous support and attention to Stewardship during 2011. Stewardship is an act of Worship which blesses each one of us as we give our First Fruits to the Lord.

2011 Stewardship Committee: Jan Fisher, chmn., Lowell Weeks, Lois Brown, Mary Hugus, and Lynda Ringold

# ALTAR FLOWER OPENINGS FOR 2012



January 1, 15, 22, 29	July 1, 8, 15, 22, 29
February 5	August 5, 19, 26
March - no flowers during Lent	September 2, 9, 16
April 8, 15, 22, 29	October 14, 21, 28
May 13, 20	November 4, 18, 21
June 3, 10, 17	December 2, 9, 16, 30

**CONTACT THE CHURCH OFFICE TO RESERVE A DATE.**

## Thank You!

*Dear Friends,*

*Kristi and I would like to express our grateful thanks to all of our First English Family for your many gifts of love and caring throughout this past year. You have been a sign of God's Love to us.*

*Your patience, love, and wisdom continue to be a great gift to us in the mutual ministry we share together. Your friendships filled with joy and encouragement are a continued source of inspiration. We remember you daily in our prayers, giving thanks to God for the great blessing you are in our lives.*

*Thank you for the many beautiful Christmas greetings we received this past Christmas and all your wonderful gifts. Each has been so greatly appreciated! You have truly shared with us the JOY and LOVE of our Savior's birth!*

*May Christ richly bless you and your families in this new Epiphany Season as we celebrate the revelation of the Child born in Bethlehem. May the light of Bethlehem's Star call each one of us to kneel before our Savior, where wisemen still seek Him.*

*Gods Joy and Peace to you and your families in the gift of this New Year!*

*Love,  
Pastor Paul and Kristi*

## **WORKDAY LADIES NEED MACHINE SEWERS!**

**IF YOU WOULD HAVE TIME TO DONATE AS A MEANS OF HELPING “ASSEMBLE” QUILTS FOR LUTHERAN WORLD RELIEF WE COULD USE YOUR HELP! WE NEED TO GET HELPERS TO CUT SQUARES, SEW SQUARES, KNOT AND TIE THE QUILTS, AND PIN THE HEMS IN PLACE TO BE FINISHED BY MACHINE. AS YOU CAN SEE THERE ARE VARIOUS TASKS THAT CAN BE COMPLETED. PLEASE CONTACT PAT REED AT 419.756.1372 IF YOU HAVE QUESTIONS OR CAN HELP. (YOU DON'T HAVE TO BE A PROFESSIONAL SEAMSTRESS TO BE A VALUE IN THIS PROJECT.)**

**PLEASE NOTE CHANGE IN MEETING TIME: FIRST AND THIRD WEDNESDAYS FROM 1:00 PM TO 4:00 PM.**

## ***WARM UP AMERICA PROJECT***

*We continue with the Warm Up America Project which consists of knitting or crocheting a specific size square. Eventually Jane Sprang will take the completed squares and crochet them together into a lovely warm afghan. If you can help produce the squares, see Jane Sprang on Sunday after the 10:00 service. A nice supply of yarn is available at no charge!*

## **LUTHERAN OUTDOOR MINISTRIES TAKING APPLICATIONS FOR SUMMER 2012 EMPLOYMENT**

If you are 18 years old, love Jesus, love kids and need a meaningful summer job why no consider applying to LOMO? They are presently accepting applications for various summer positions (counselors, kitchen aids, lifeguards, etc.) You can apply online at: [www.lomocamps.org](http://www.lomocamps.org). We have wonderful Camp Mowana right here on the East side of Mansfield, plus there is Camp Luther in Conneaut and Lutheran Memorial Camp in Fulton, OH.

## Requests for Prayer Chain

Please call **Carol Lauthers** at **419.884.0243** (new home #) or **419.612.4088** (cell) with any requests for special prayers and support. Prayers can be for members or non-members. Also please consider joining this group of prayer warriors!

**Visitor Newsletter Deadline: Tuesday, January 17, 2012**  
**Assembled and mailed: Thursday, January 26, 2012**

PLEASE EMAIL ALL ARTICLES TO: [newslettereditor53@yahoo.com](mailto:newslettereditor53@yahoo.com) or leave in the mailslot at upper left of the slots (marked Visitor Editor and/or Connie Stewart. Volunteer editor Jan Fisher can be reached at 419.589.2820.

### **FIRST ENGLISH LUTHERAN CHURCH E-MAIL AND WEB SITE**

Pastor Larson	<a href="mailto:plarson@felc-mansfield.org">plarson@felc-mansfield.org</a>
Pastor Jones	<a href="mailto:ajones@felc-mansfield.org">ajones@felc-mansfield.org</a>
Becky Pittman	<a href="mailto:bpittman@felc-mansfield.org">bpittman@felc-mansfield.org</a>
Karen Frayer	<a href="mailto:kfrayer@felc-mansfield.org">kfrayer@felc-mansfield.org</a>
Connie Stewart	<a href="mailto:cstewart@felc-mansfield.org">cstewart@felc-mansfield.org</a>
Church Office	<a href="mailto:office@felc-mansfield.org">office@felc-mansfield.org</a>
Jan Fisher, Editor	<a href="mailto:newslettereditor53@yahoo.com">newslettereditor53@yahoo.com</a>

Visit our web site at: [www.felc-mansfield.org](http://www.felc-mansfield.org)

*Emergency cell phone numbers if the pastors cannot be contacted at church or home:*

Pastor Paul Larson, 419-632-1875.

Pastor Andy Jones, 419-989-3715.

## January 2012

Sunday	Monday	Tuesday	Wednesday	Thursday	Friday	Saturday
<b>1</b> <b>**New Years Day**</b> 10:00am Combined Worship Holy Communion(Nave)	<b>2</b> CHURCHOFFICECLOSED 9:30am Men's Group @ Denny's 7:00pm Property Committee (UC)	<b>3</b> 9:30am CDS (Chapel) 12:00pm -1 pm Bible Study (ER) 7:00pm Prayer Shawl/Eve Circle (ER)	<b>4</b> 9:30am CDS Music (UC) 12:10pm Worship&Lunch (C/UC) 1:00pm Workday Ladies (3rd fl)	<b>5</b> 11:30am Bulletin Assy(3rd fl) 2:00pm Staff Meeting (ER) 5:30pm Proclaim Reh (UC)	<b>6</b> 7:00am Prayer Partners (NL) 7:00pm The Star of Bethlehem (ER)	<b>7</b>
<b>8</b> 8:30am PastorsPrayerPartners 9:00am Sunday School 10:00am Worship (Nave) 10:00am Proclaim! (UC) 11:30am Alpha (ER) 11:30am Senior Choir Reh 5:30pm Confirm Class (UC)	<b>9</b> CHURCHOFFICECLOSED 11:30am Lydia Circle(ER) 1:00pm Finance Committee (FR) 6:30pm Small Group (ER)	<b>10</b> 9:30am CDS (Chapel) 12:00pm -1 pm Bible Study (ER) 1:30pm Small group (FR) 7:00pm Council (UC)	<b>11</b> 9:30am CDS Music (UC) 12:10pm Worship&Lunch (C/UC)	<b>12</b> 11:30am Bulletin Assy(3rd fl) 5:30pm Proclaim Reh (UC)	<b>13</b> 7:00am Prayer Partners (NL) 6:00pm Staff & Council Christmas Party (ER)	<b>14</b>
<b>15</b> 8:30am PastorsPrayerPartners 9:00am Sunday School 10:00am Worship (Nave) New Members reception 10:00am Proclaim! (UC) 11:30am Senior Choir Reh 11:30am Alpha (ER)	<b>16</b> CHURCHOFFICECLOSED 1:00pm Mellon Meeting (FR) 1:30pm Women's Ministry Team Meeting (ER)	<b>17</b> <b>**Visitor deadline**</b> 9:00am Holy Comm@Elmcroft 9:30am CDS (Chapel) 10:15am Holy Comm@Waterford 12:00pm -1 pm Bible Study (ER)	<b>18</b> 9:30am CDS Music (UC) 12:10pm Worship&Lunch (C/UC) 1:00pm Workday Ladies (3rd fl)	<b>19</b> 9:30am Holy Comm@Sterling 11:30am Bulletin Assy(3rd fl) 2:00pm Staff Meeting (FR) 5:30pm Proclaim Reh (UC)	<b>20</b> 7:00am Prayer Partners (NL) 10:30am - 2 PM Friendly Friday Srs (ER)	<b>21</b>
<b>22</b> 8:30am PastorsPrayerPartners 9:00am Sunday School 10:00am Worship (Nave) 10:00am Proclaim! (UC) 11:30am Senior Choir Reh 11:30am Alpha (ER) 5:30pm Confirm Class (UC)	<b>23</b> CHURCHOFFICECLOSED 6:30pm Small Group (ER)	<b>24</b> 9:30am CDS (Chapel) 12:00pm -1 pm Bible Study (ER) 1:30pm Small Group (FR) 7:00pm Worship Committee (ER)	<b>25</b> 9:30am CDS Music (UC) 12:10pm Worship&Lunch (C/UC)	<b>26</b> 11:30am Bulletin Assy(3rd fl) 12:30pm Visitor Assy (3rd fl) 5:30pm Proclaim Reh (UC)	<b>27</b> 7:00am Prayer Partners (NL)	<b>28</b>
<b>29</b> <b>*FOOD COLLECTION*</b> 8:30am PastorsPrayerPartners 9:00am Sunday School 10:00am Proclaim! (UC) 10:00am Worship (Nave) 11:00am Congregational Budget Meeting 11:30am Senior Choir Reh 11:30am Alpha (ER) 5:30pm Confirm Class (UC)	<b>30</b> CHURCHOFFICECLOSED	<b>31</b> 9:30am CDS (Chapel) 12:00pm -1 pm Bible Study (ER)				

**Legend:**  
 BRC - Blackfork Retreat Center  
 C - Chapel in Luther Hall  
 CDS - Christian Day School  
 Ch Rm - Choir Room  
 ER - Emmaus Room  
     First Floor, Luther Hall  
 FR - Fireside Room  
     Second Floor, Luther Hall  
 Nave - Main Sanctuary  
 UC - Undercroft  
     (church basement)  
 3<sup>rd</sup> - Third Floor, Luther Hall  
 NL - Narthex Lounge